



## MINI CANAL



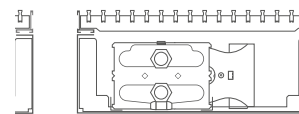
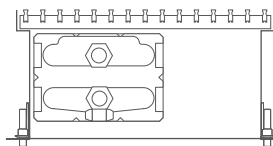
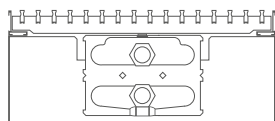


# MINI CANAL

|  |           |  |           |
|--|-----------|--|-----------|
| <b>CONTENT</b>                           | <b>3</b>  | <b>THERMOSTAT</b>                        | <b>30</b> |
| <b>MODEL OVERVIEW</b>                    | <b>4</b>  | <b>PARTS</b>                             | <b>32</b> |
| <b>INTRODUCTION</b>                      | <b>5</b>  | <b>CORRECTION FACTORS</b>                | <b>36</b> |
| <b>OVERVIEW GRILLES</b>                  | <b>6</b>  | <b>GUIDELINE FOR LIMITING FLOW NOISE</b> | <b>37</b> |
| Rigid anodised aluminium grilles         | 6         | <b>PRESSURE DROP</b>                     | <b>38</b> |
| Designo rigid anodised aluminium grilles | 7         | Type 04 other end                        | 38        |
| Retractable anodised aluminium grilles   | 8         | Type 05                                  | 39        |
| Retractable stainless steel grille       | 9         | Type 09                                  | 40        |
| Roll-up wooden grilles                   | 10        | Type 10                                  | 41        |
| Designo roll-up wooden grilles           | 11        | Type 14                                  | 42        |
| <b>OVERVIEW CORNERS 90° OR 135°</b>      | <b>12</b> | Type 15                                  | 43        |
| <b>TECHNICAL INFORMATION</b>             | <b>14</b> | Type 19                                  | 44        |
| Composition                              | 14        | Type 20                                  | 45        |
| Coding                                   | 15        | <b>SPECIALS</b>                          | <b>46</b> |
| Standard delivery                        | 15        | Other systems ventilation                | 48        |
| Product summary                          | 16        | Special versions                         | 48        |
| Dimensions                               | 16        | Special accessories                      | 50        |
| Installation                             | 16        | Grilles & frames                         | 51        |
| Operating principle                      | 16        |  |           |
| Grille Overview                          | 17        |  |           |
| Accessories                              | 18        |  |           |
| Hydronic connection                      | 19        |  |           |
| <b>Technical table</b>                   | <b>20</b> |  |           |
| Height 009                               | 20        |  |           |
| Height 011                               | 23        |  |           |
| Height 014                               | 26        |  |           |
| Height 019                               | 28        |  |           |

Do you need more output? Then go for the Mini Canal Pro

Do you want Light Cooling as well? Then go for the Mini Canal Hybrid.



|                                 | MINI CANAL   | MINI CANAL PRO   | MINI CANAL HYBRID  |          |                     |          |          |          |          |          |
|---------------------------------|--|--|--|----------|---------------------|----------|----------|----------|----------|----------|
| <b>OPERATING PRINCIPLE</b>      | natural convection   | natural convection   | convection with fan units                                      |          |                     |          |          |          |          |          |
| <b>DIMENSIONS</b>               |  |  |  |          |                     |          |          |          |          |          |
| Height (in cm)                  | 009 - 011 - 014 - 019  | 009 - 012 - 015 - 020  | 014  |          |                     |          |          |          |          |          |
| Width (in cm)                   | 14 - 18 - 26 - 34 - 42   | 14 - 18 - 23 - 30 - 38   | 26 - 34 - 42   |          |                     |          |          |          |          |          |
| Length (in cm)                  | 070 - 130 (in steps of 10 cm)<br>150 - 490 (in steps of 20 cm) | 070 - 130 (in steps of 10 cm)<br>150 - 490 (in steps of 20 cm) | 070 - 130 (in steps of 10 cm)<br>150 - 310 (in steps of 20 cm) |          |                     |          |          |          |          |          |
| <b>OUTPUT</b>                   |  |  |  |          |                     |          |          |          |          |          |
| (75/65/20°C) Watts              | 76 - 4184  | 84 - 4407  | 517 - 8779   |          |                     |          |          |          |          |          |
| (16/18/27°C) Watts              | -  | -  | 49 - 380   |          |                     |          |          |          |          |          |
| <b>HYDRONIC CONNECTION</b>      |  |  |  |          |                     |          |          |          |          |          |
| Opposite end connections        | B14 H009 & B14 H011  |  |  |          | B14 H009 & B14 H012 |          |          |          | -        |          |
| Same-end connection             |  |  |  |          |                     |          |          |          | ✓        |          |
| height                          | 009  | 011  | 014  | 019      | height              | 009      | 012      | 015      | 020      |          |
| width 14                        | -  | -  | ✓  | ✓        | width 14            | -        | -        | ✓        | ✓        |          |
| width 18                        | ✓  | ✓  |  | ✓        | width 18            | ✓        | ✓        | ✓        | ✓        |          |
| width 26                        | ✓  | ✓  | ✓  | ✓        | width 23            | ✓        | ✓        | ✓        | ✓        |          |
| width 34                        | ✓  | ✓  | ✓  | ✓        | width 30            | ✓        | ✓        | ✓        | ✓        |          |
| width 42                        | ✓  | ✓  | ✓  | ✓        | width 38            | ✓        | ✓        | ✓        | ✓        |          |
| <b>ELECTRICAL CONNECTION</b>    |  |  |  |          |                     |          |          |          |          |          |
| Power supply 230 VAC            | -  | -  | -  | -        | -                   | -        | -        | -        | -        | optional |
| Power supply 24 VDC             | -  | -  | -  | -        | -                   | -        | -        | -        | -        | optional |
| <b>ACCESSORIES</b>              |  |  |  |          |                     |          |          |          |          |          |
| Anchorage                       | ✓  | -  | -  | -        | -                   | -        | -        | -        | -        | ✓        |
| Ventilation                     | optional   | optional   | optional   | optional | optional            | optional | optional | optional | optional | optional |
| Cover plate                     | optional   | optional   | optional   | optional | optional            | optional | optional | optional | optional | optional |
| Acoustic strip                  | optional   | optional   | optional   | optional | optional            | optional | optional | optional | optional | optional |
| Height adjustment 0 - 4.5 cm    | optional   | optional   | optional   | optional | optional            | optional | optional | optional | optional | optional |
| Height adjustment 4.5 - 10 cm   | optional   | optional   | optional   | optional | optional            | optional | optional | optional | optional | optional |
| Base insulation                 | optional   | optional   | optional   | optional | optional            | optional | optional | optional | optional | optional |
| 3-sided insulation              | optional   | optional   | optional   | optional | optional            | optional | optional | optional | optional | optional |
| <b>GRILLE</b>                   |  |  |  |          |                     |          |          |          |          |          |
| Rigid aluminium grilles         | ✓  | ✓  | ✓  | ✓        | ✓                   | ✓        | ✓        | ✓        | ✓        | ✓        |
| Designo rigid aluminium grilles | ✓  | ✓  | ✓  | ✓        | ✓                   | ✓        | ✓        | ✓        | ✓        | ✓        |
| Roll-up aluminium grilles       | ✓  | ✓  | ✓  | ✓        | ✓                   | ✓        | ✓        | ✓        | ✓        | ✓        |
| Roll-up stainless steel grille  | ✓  | ✓  | ✓  | ✓        | ✓                   | ✓        | ✓        | ✓        | ✓        | ✓        |
| Roll-up wooden grilles          | ✓  | ✓  | ✓  | ✓        | ✓                   | ✓        | ✓        | ✓        | ✓        | ✓        |
| Designo roll-up wooden grilles  | ✓  | ✓  | ✓  | ✓        | ✓                   | ✓        | ✓        | ✓        | ✓        | ✓        |
| Pliable aluminium grilles       | -  | -  | -  | -        | -                   | -        | -        | -        | -        | -        |

# MINI CANAL

## COMPACT DIMENSIONS AND SHALLOW INSTALLATION DEPTH

For spaces with large windows, conservatories, display windows and offices.

From a depth of 9 cm, Mini Canal is the perfect solution for multi - storey buildings and computer floors.

Hidden under the grille is an ultra fast Low-H<sub>2</sub>O element.

The internal elements of the Mini Canal have been made "invisible", using lacquered dark grey components.

The only eye-catching element left is the grille-cover which can be perfectly tailored to match the floor or the interior design.

- height from 9 cm
- delivered ready-made
- a range of grilles for every interior
- a perfectly tailored comfort temperature
- Low-H<sub>2</sub>O technology with super conductive and ultra fast heat exchanger for low energy consumption and maximum heat emission
- 30 year warranty on the heat exchanger



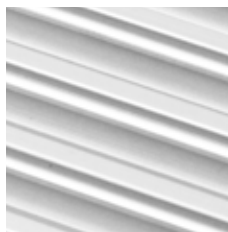
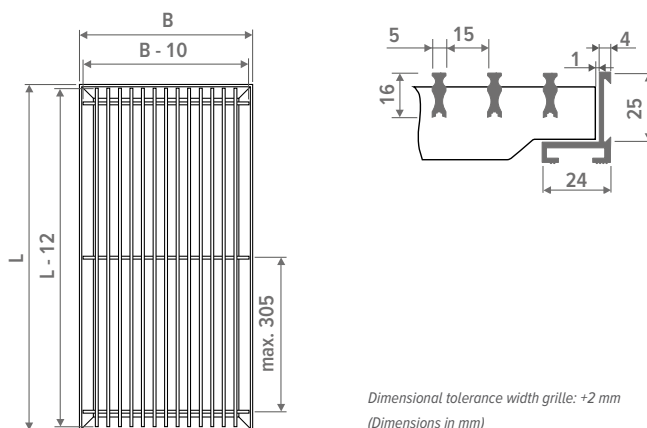


## RIGID ANODISED ALUMINIUM GRILLES

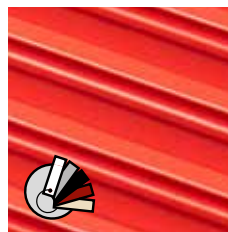
Rigid anodized aluminium grille with matching colour frame.

### PROPERTIES

- eco-friendly, scratch-resistant powder coating with high UV-resistance
- free air flow: 75%
- no correction factor to apply on the output



**SNA** Alu. natural



**SNC/XXX** Alu. coated

⚠ Our grilles are available in all colours, with the exception of Sand blast grey 001. In case of intensive use (installation in circulation areas, for example in front of sliding windows and doors), wear is evidently inevitable.



**SBL** Black



**SDB** Dark brown



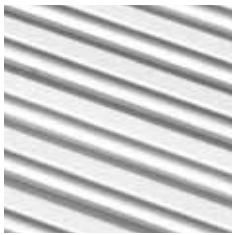
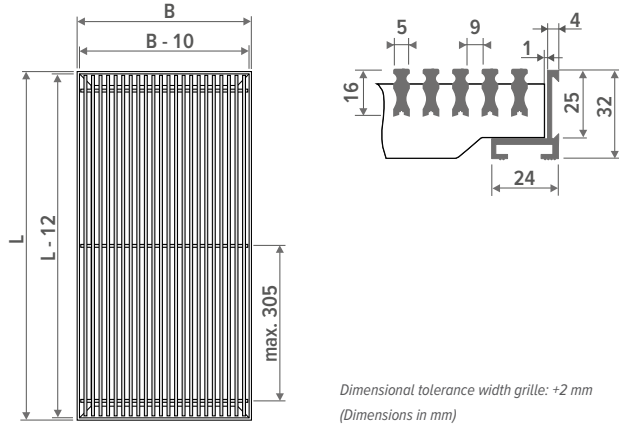
**SBR** Brass-coloured

## DESIGNO RIGID ANODISED ALUMINIUM GRILLES

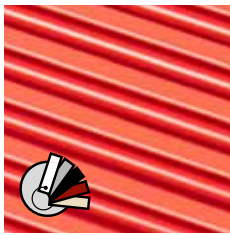
Rigid anodized aluminium grille, Designo model with reduced slat spacing. Matching colour frame.

### PROPERTIES

- eco-friendly, scratch-resistant powder coating with high UV-resistance
- free air flow: 62.5%
- output correction factor: 0.97



**DNA** Alu. natural



**DNC/XXX** Alu. coated

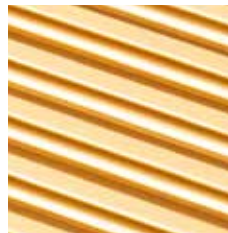
**!** Our grilles are available in all colours, with the exception of Sand blast grey 001. In case of intensive use (installation in circulation areas, for example in front of sliding windows and doors), wear is evidently inevitable.



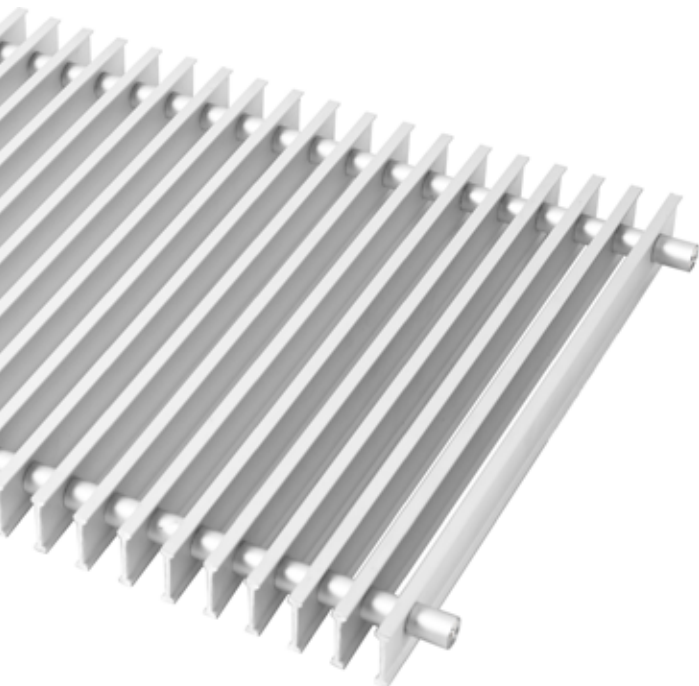
**DBL** Black



**ddb** Dark brown



**DBR** Brass-coloured

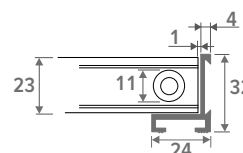
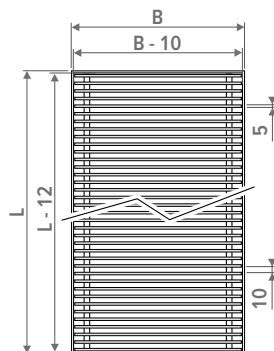


## RETRACTABLE ANODISED ALUMINIUM GRILLES

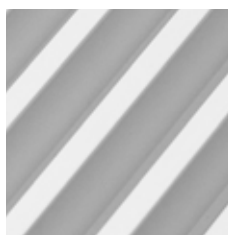
Roll-up anodized aluminium grille with frame in matching colour.

### PROPERTIES

- eco-friendly, scratch-resistant powder coating with high UV-resistance
- free air flow: 70%
- no correction factor to apply on the output



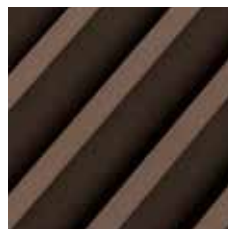
Dimensional tolerance width grille: +2 mm  
(Dimensions in mm)



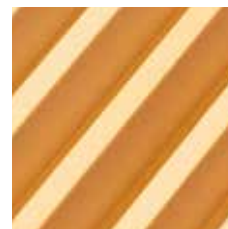
**RNA** Alu. natural



**RBL** Black

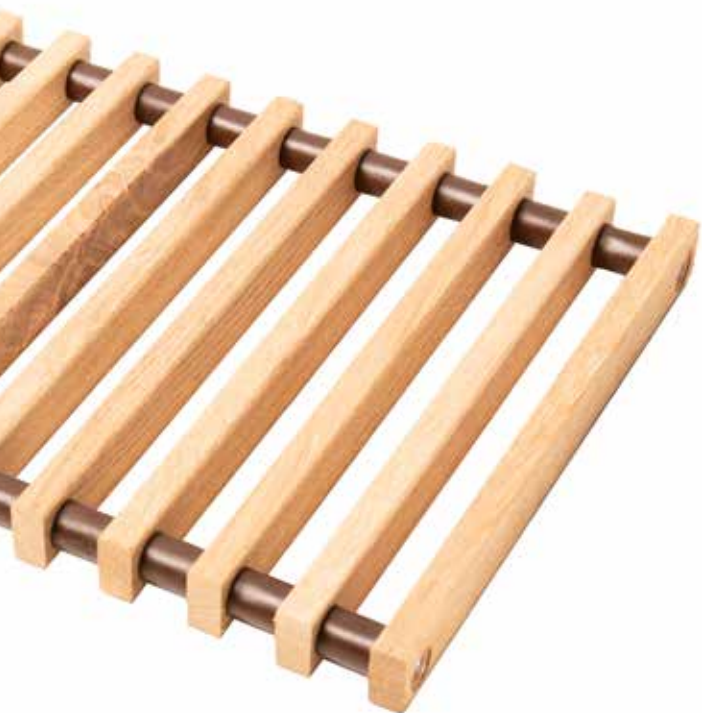


**RDB** Dark brown



**RBR** Brass-coloured



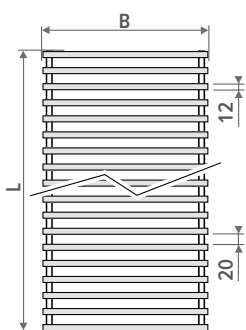


## ROLL-UP WOODEN GRILLES

Roll-up natural or varnished grille, with dark brown coloured synthetic spacers. Frame in brown anodized aluminium.

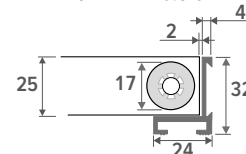
### PROPERTIES

- eco-friendly, scratch-resistant powder coating with high UV-resistance
- free air flow: 63%
- output correction factor 0.97

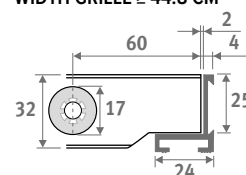


Dimensional tolerance width grille: +2 mm  
(Dimensions in mm)

### WIDTH GRILLE ≤ 40.8 CM



### WIDTH GRILLE ≥ 44.8 CM



## NATURAL WOODEN ROLL-UP GRILLES



**RON** Oak natural    **RBN** Beech natural    **RMN** Merbau natural

## VARNISHED WOODEN ROLL-UP GRILLES



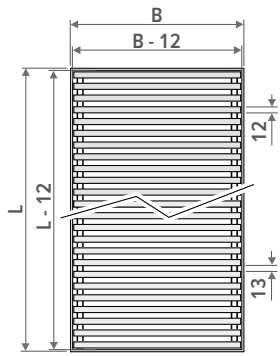
**ROV** Oak varnished    **RBV** Beech varnished    **RMV** Merbau varnished

## DESIGNO ROLL-UP WOODEN GRILLES

Roll-up natural or varnished grille, Designo model with reduced slat spacing and natural colour anodized aluminium spacers. Frame in natural coloured anodized aluminium.

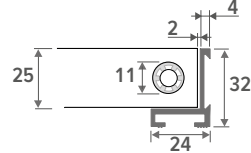
### PROPERTIES

- eco-friendly, scratch-resistant powder coating with high UV-resistance
- free air flow: 52%
- output correction factor: 0.93

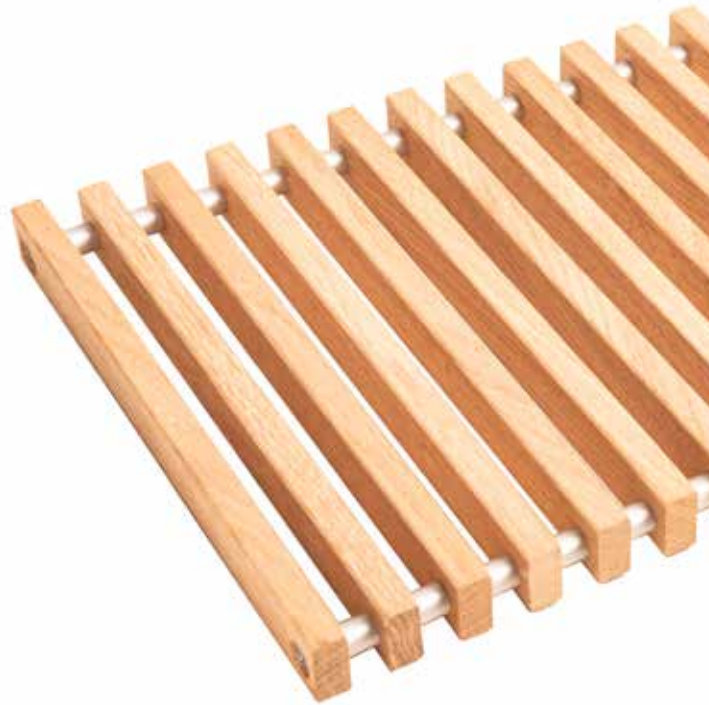
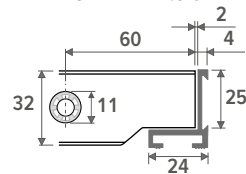


Dimensional tolerance width grille: +2 mm  
(Dimensions in mm)

### WIDTH GRILLE ≤ 40.8 CM



### WIDTH GRILLE ≥ 44.8 CM

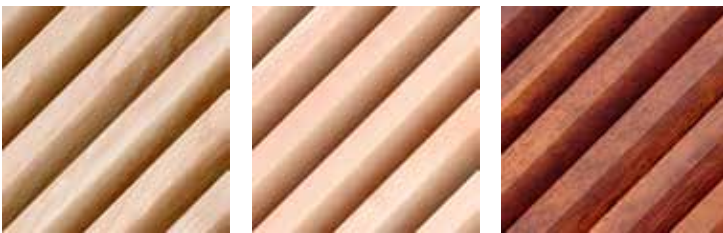


## DESIGNO NATURAL WOODEN RETRACTABLE GRILLES



**DON** Oak natural    **DBN** Beech natural    **DMN** Merbau natural

## DESIGNO VARNISHED ROLL-UP WOODEN GRILLES



**DOV** Oak varnished    **DBV** Beech varnished    **DMV** Merbau varnished



## WOODEN AND ALUMINIUM GRILLES

- to order corner units, please complete the Mini Canal code with the desired angle (see code of the angle in the illustrations below)
- delivery: mitred ducts and grilles and couplings for invisible installation
- if possible, use standard lengths in order to avoid additional costs for customisation
- output values can be consulted in the tables of the respective length
- please provide a drawing with your order.

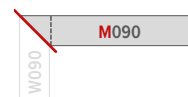
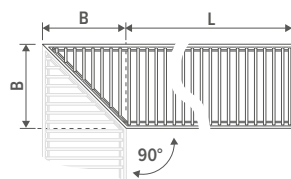
### ORDERING EXAMPLE

MICL 009 110 14 RNA TW090 TM090

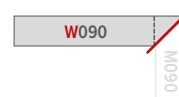
### LEGEND (in mm)

|   |     |     |     |     |     |
|---|-----|-----|-----|-----|-----|
| B | 140 | 180 | 260 | 340 | 420 |
| A | 60  | 75  | 110 | 140 | 175 |

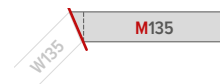
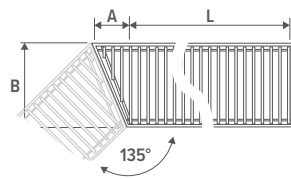
### SINGLE CORNERS



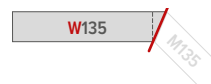
C01: M090 (corner 90° M)



C03: W090 (corner 90° W)



C02: M135 (corner 135° M)



C04: W135 (corner 135°)



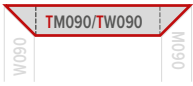
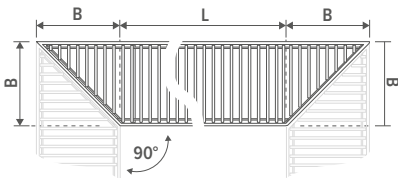
### DISTINCT CORNERS

See Specials

# MINI CANAL

# OVERVIEW CORNERS 90° OR 135°

## DOUBLE CORNERS



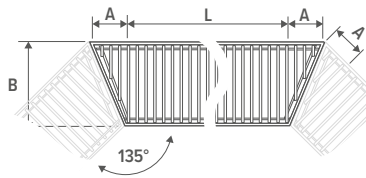
C11: TW090/TM090 (2 x corner 90° T)



C05: PW090/PW090 (2 x corner 90° PW)



C08: PM090/PM090 (2 x corner 90° PM)



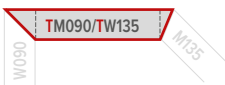
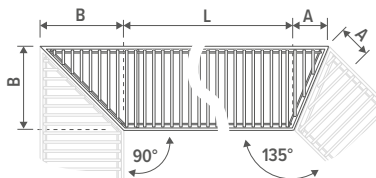
C13: TW135/TM135 (2 x corner 135° T)



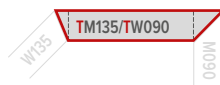
C10: PM135/PM135 (2 x corner 135° PM)



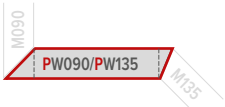
C07: PW135/PW135 (2 x corner 135° PW)



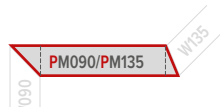
C12: TW090/TM135 (corner 90° & 135° T)



C14: TW135/TM090 (corner 135° & 90° T)



C06: PW090/PW135 (corner 90° & 135° PW)



C09: PM090/PM135 (corner 90° & 135° PM)



**DISTINCT CORNERS**

See Specials

## COVER PLATE

protects the Mini Canal against contamination and damaging during construction works

## GRILLE

aluminium and wooden grilles in a variety of colours and materials



Rigid aluminium grilles

Designo rigid aluminium grilles

Roll-up aluminium grilles

Roll-up wooden grilles

Designo roll-up wooden grilles

## LOW-H<sub>2</sub>O HEAT EXCHANGER

The Low-H<sub>2</sub>O heat exchanger is the hyper-reactive, aluminium and copper motor of the ecological Jaga products.



## AIR VENT

## OPTION

acoustic strip in black rubber prevents impact sounds

## BRACKETS

from electrolytic galvanized steel plate dark grey lacquered in RAL 7024

## SEALS

for the connection holes, made of black synthetic material

## PRE-PERFORATED SYSTEM FOR CONNECTIONS

provided as standard to enable continuous installation

**ANCHORAGE** number in accordance with length

## ALUMINIUM L-PROFILE / Z-PROFILE

in anodised aluminium, colour customised to the grille

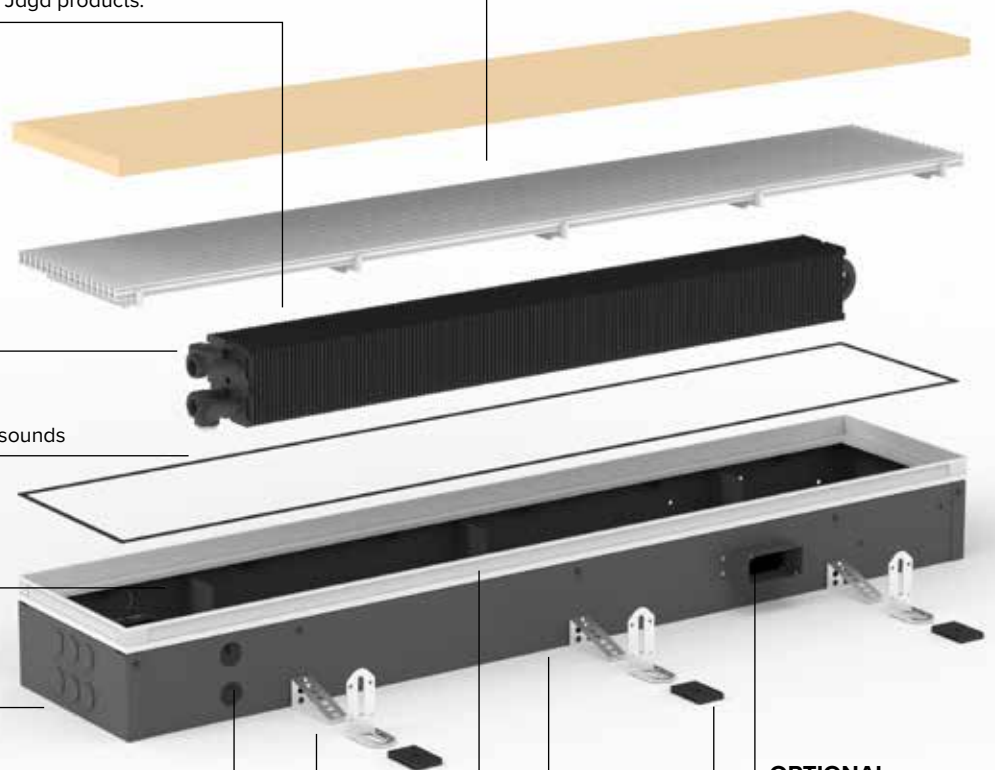


L-profile MICL

Z-profile MICZ

## MINI CANAL DUCT

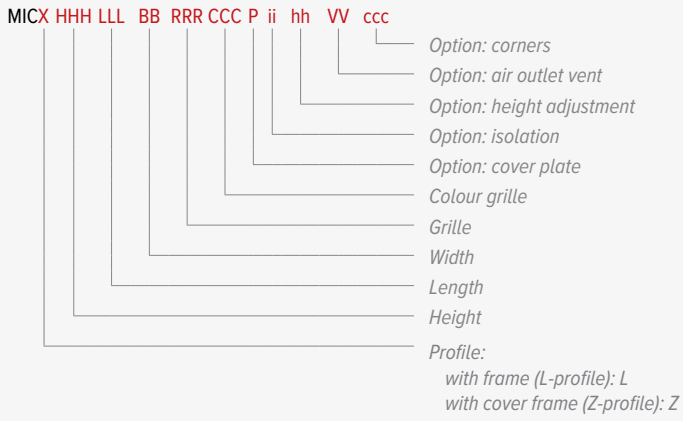
from Sendzimir galvanized and dark grey lacquered steel plate; thickness 1 mm, with connection holes on all sides



**OPTIONAL**  
nozzle(s) for  
ventilation duct

**OPTION**  
easy height adjustment  
for uneven floors.  
Provided with acoustic  
decoupling.

## ORDER CODE MINI CANAL



## STANDARD DELIVERY

- Completely assembled dark-grey floor drain with:
- Low-H<sub>2</sub>O heat exchanger met vuilafstotende en stofwerende laklaag in grafietgrijs (RAL 7024)
  - air vent(s) 1/8" and drain plug(s) 1/2"
  - grille and mounted L-profile frame or Z-profile cover frame
  - anchorage

## PROFILE

### L-profile: MICL



### Z-profile: MICZ



## HEIGHT / WIDTH

| HEIGHT | WIDTH | 14 | 18 | 26 | 34 | 42 |
|--------|-------|----|----|----|----|----|
| 009    |       | ✓  | ✓  | ✓  | ✓  | ✓  |
| 011    |       | ✓  | ✓  | ✓  | ✓  | ✓  |
| 014    |       | ✓  | -  | ✓  | ✓  | ✓  |
| 019    |       | -  | -  | ✓  | ✓  | ✓  |

## LENGTH

070 cm to 490 cm

## GRILLE



## COLOUR GRILLE

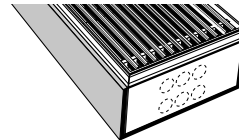
Our grilles are available in all colours, with the exception of Sand blast grey 001. In case of intensive use (installation in circulation areas, for example in front of sliding windows and doors), wear is evidently inevitable.

## OPTIONS

### Cover plate



### Isolation



### Height adjustment

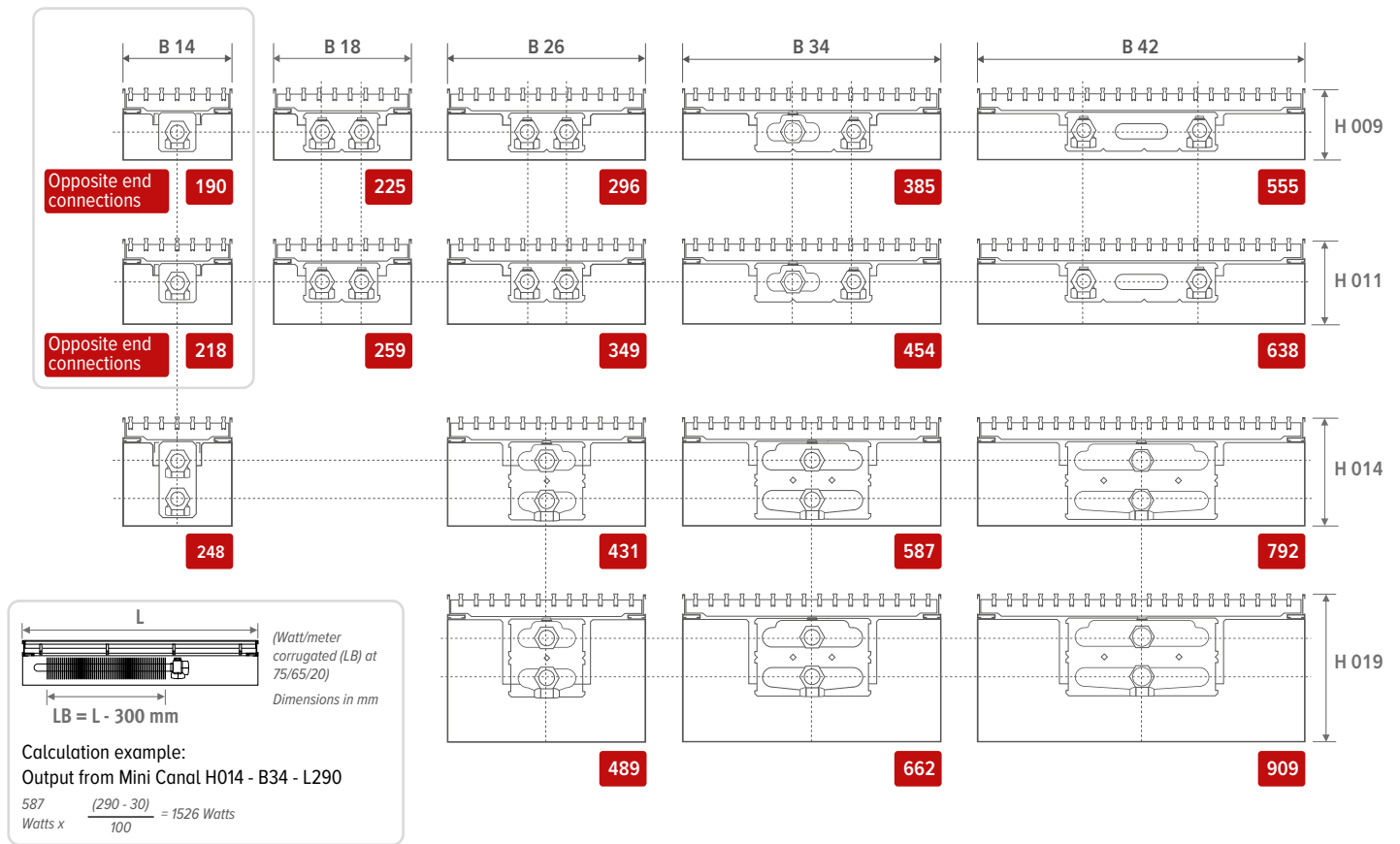


### Air outlet vent

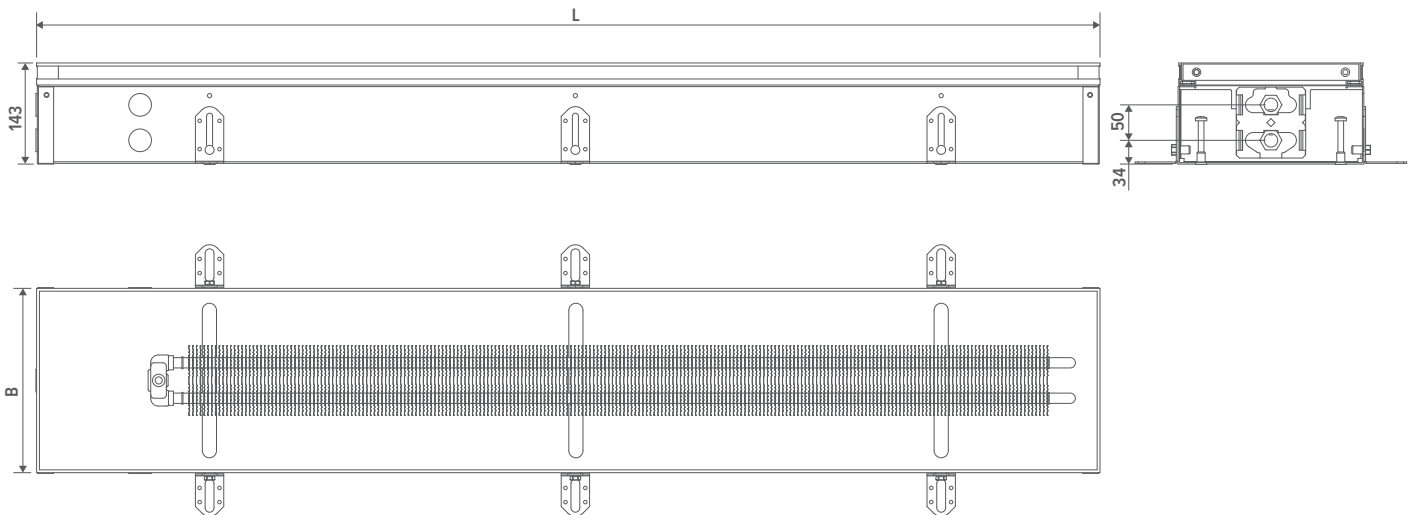


### Corners





## DIMENSIONS (in mm)

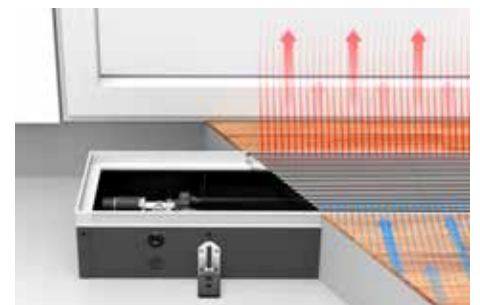


## INSTALLATION

- position builder's level on finished floor level by means of anchoring bars or the optional height adjusters
- feed the pipes through and seal the through holes
- possibly provide additional tube for the remote controlled radiator valve
- test installation for pressure levels
- finish the floor

## OPERATING PRINCIPLE

The downward cold air flow associated with glazed façades often causes discomfort. Mini Canal ensures a warm air curtain: the cold air layer from the glass and the cooler return air on the floor are drawn in, heated and mixed with the warmer upper air so a balanced and even comfort temperature is achieved.



## CATEGORY 1



**SNA**  
Rigid alu. natural

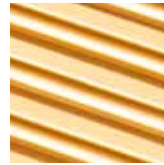


**SBR**  
Rigid alu. Brass-coloured

## CATEGORY 2



**DNA**  
Designo  
Rigid alu. natural



**DBR**  
Designo rigid alu.  
Brass-coloured



**DDB**  
Designo rigid alu.  
Dark brown

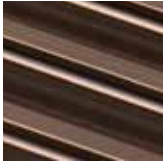
## CATEGORY 3



**DMV**  
Designo  
roll-up wooden  
Merbau varnished



**DON**  
Designo  
roll-up wooden oak  
natural



**SDB**  
Rigid alu. Dark  
brown



**SBL**  
Rigid alu. Black



**DBL**  
Designo  
rigid alu. Black



**RMN**  
roll-up wooden  
Merbau natural



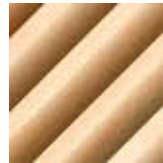
**RMV**  
roll-up wooden  
Merbau varnished



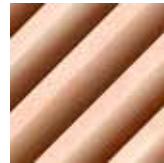
**DOV**  
Designo  
roll-up wooden oak  
varnished



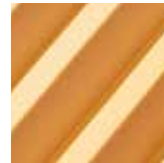
**RBL**  
roll-up aluminium.  
Black



**RBN**  
Roll-up wooden  
beech natural



**RBV**  
Roll-up wooden  
beech varnished



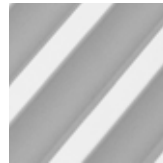
**RBR**  
Roll-up aluminium.  
Brass-coloured



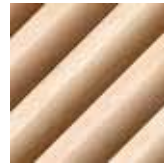
**RDB**  
roll-up aluminium.  
Dark brown



**DBV**  
Designo  
roll-up wooden  
beech varnished



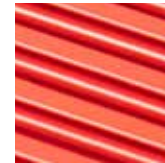
**RNA**  
roll-up aluminium.  
natural



**RON**  
roll-up wooden oak  
natural



**ROV**  
roll-up wooden oak  
varnished



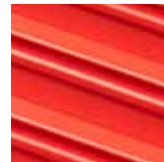
**DNC XXX**  
Designo  
rigid coated alu



**DBN**  
Designo  
roll-up wooden  
beech natural



**DMN**  
Designo  
roll-up wooden  
Merbau natural

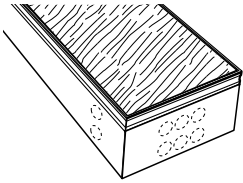


**SNC XXX**  
rigid coated alu

# MINI CANAL

# ACCESSORIES

## COVER PLATE

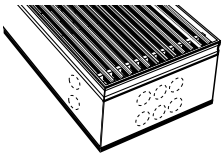


- fibreboard, thickness 22 mm
- protects the Mini Canal against contamination and damaging during construction works

**CODE**  
M I C L H H H L L L B B X X X P pre-mountend

fill in grille code  
Enter width  
fill out length  
Enter the height.

## BASE INSULATION



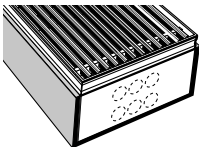
⚠ (not available separately)

- dark grey extruded EPDM, thickness 5 mm
- also to avoid transfer of noise when used on upper storeys

**CODE**  
M I C L H H H L L L B B X X X I1 pre-mountend

fill in grille code  
Enter width  
fill out length  
Enter the height.

## 3-SIDED INSULATION



⚠ (not available separately)

dark grey extruded EPDM, thickness 5 mm

**CODE**  
M I C L H H H L L L B B X X X I2 pre-mountend

fill in grille code  
Enter width  
fill out length  
Enter the height.

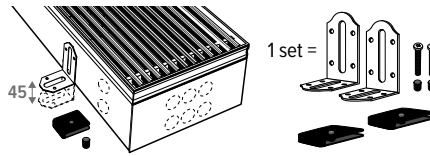
## BASE INSULATION & 3-SIDED INSULATION

⚠ (not available separately)

**CODE**  
M I C L H H H L L L B B X X X I3 pre-mountend

fill in grille code  
Enter width  
fill out length  
Enter the height.

## HEIGHT ADJUSTMENT

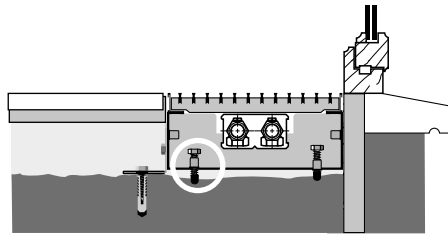


- simple height control for uneven subfloors
- provided with acoustic decoupling

**CODE**  
M I C L H H H L L L B B X X X A 0 - 4.5 cm pre-mountend  
M I C L H H H L L L B B X X X B 4 - 10 cm pre-mountend

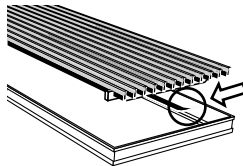
fill in grille code  
Enter width  
fill out length  
Enter the height.

| LENGTH<br>cm | SETS | LENGTH<br>cm | SETS |
|--------------|------|--------------|------|
| 110          | 2    | 330 > 370    | 7    |
| 130 > 190    | 3    | 410          | 8    |
| 210          | 4    | 450 > 490    | 10   |
| 230 > 310    | 5    |              |      |



The height control option is always provided with extra adjusting screws in order to install the duct flat against the window frame.

## ACOUSTIC STRIP



- for aluminium and wood grilles (not for stainless steel)
- black adhesive rubber strip, thickness 0.5 mm
- prevents impact sounds
- roll 6 metre
- to avoid contact noises. Order the number of rolls required according to the circumference of the frame:  $(B + L) \times 2$ .

**CODE**  
7690.02

## METAL CONNECTION ADAPTER



- connection for pretreated air
- height 4 cm x length 9 cm
- made from galvanised steel plate

**CODE**  
M I C L H H H L L L B B X X X V1 4 x 9 cm

fill in grille code  
Enter width  
fill out length  
Enter the height.



- connection for pretreated air
- supply diameter: Ø8 - Ø10 - Ø12.5
- made from galvanised steel plate

**CODE**  
M I C L 014 L L L B B X X X V2 Ø8 cm  
M I C L 019 L L L B B X X X V2 Ø8 cm  
M I C L 019 L L L B B X X X V3 Ø10 cm  
M I C L 019 L L L B B X X X V4 Ø12.5 cm

fill in grille code  
Enter width  
fill out length

## SYNTHETIC CONNECTION ADAPTER



- pre-assembled ex-factory
- height 5.2 cm x length 13.2 cm
- synthetic material
- supplied with snap connections
- 2 O-rings are supplied

**CODE**  
M I C L H H H L L L B B X X X V5 Pre-perforated opening  
M I C L H H H L L L B B X X X V6 Pre-mountend

fill in grille code  
Enter width  
fill out length  
Enter the height.

# MINI CANAL

Mini Canal H009 & H011

Mini Canal H014 & H019

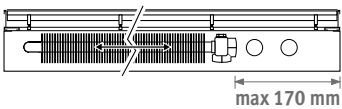
# HYDRONIC CONNECTION

## Sleeve couplings 3/4" Eurocone

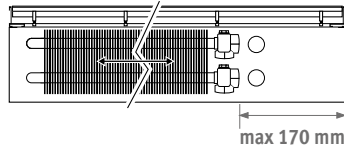
| PRECISION METAL TUBE |        | SYNTHETIC OR RPE/ALU |        |
|----------------------|--------|----------------------|--------|
| CODE                 | Tube Ø | CODE                 | Tube Ø |
| 112                  | 12/1   | 612                  | 12/2   |
| 114                  | 14/1   | 614                  | 14/2   |
| 115                  | 15/1   | 616                  | 16/2   |
| 116                  | 16/1   | 618                  | 18/2   |
| 118                  | 18/1   | 619                  | 16/1.5 |
|                      |        | 620                  | 20/2   |



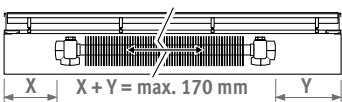
**MAXIMUM SPACE FOR CONNECTION**  
Same-end connection



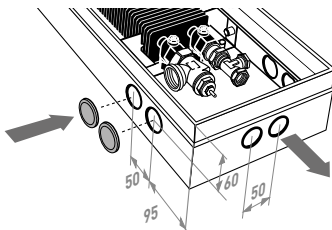
**MAXIMUM SPACE FOR CONNECTION**  
Same-end connection



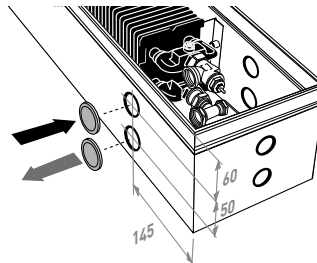
**Opposite end connections,**  
width 14 and height 009 & 011

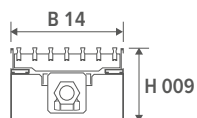


**CONNECTION DIMENSIONS**

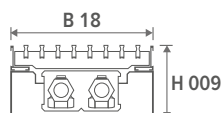


**CONNECTION DIMENSIONS**





opposite end connections



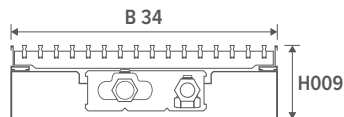
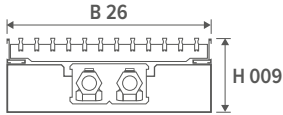
| MICL | HEIGHT<br>H<br>cm | LENGTH<br>L<br>cm | WIDTH<br>B<br>cm | HEATING<br>Room temperature 20°C |                |                |                |                     | WEIGHT<br>kg | WATER CONTENT<br>L | ORDER CODE          |
|------|-------------------|-------------------|------------------|----------------------------------|----------------|----------------|----------------|---------------------|--------------|--------------------|---------------------|
|      |                   |                   |                  | 35/30<br>Watts                   | 45/40<br>Watts | 50/45<br>Watts | 55/45<br>Watts | 75/65<br>Watts      |              |                    |                     |
| MICL | 009               | 070               | 14               | 11                               | 26             | 34             | 38             | 76                  | 4            | 0.11               | MICL 009 070 14 XXX |
|      |                   | 080               |                  | 14                               | 32             | 42             | 47             | 95                  | 5            | 0.13               | MICL 009 080 14 XXX |
|      |                   | 090               |                  | 17                               | 38             | 51             | 56             | 114                 | 5            | 0.14               | MICL 009 090 14 XXX |
|      |                   | 100               |                  | 20                               | 45             | 59             | 66             | 133                 | 6            | 0.16               | MICL 009 100 14 XXX |
|      |                   | 110               |                  | 23                               | 51             | 67             | 75             | 152                 | 6            | 0.18               | MICL 009 110 14 XXX |
|      |                   | 120               |                  | 26                               | 58             | 76             | 85             | 172                 | 7            | 0.19               | MICL 009 120 14 XXX |
|      |                   | 130               |                  | 28                               | 64             | 84             | 94             | 190                 | 7            | 0.21               | MICL 009 130 14 XXX |
|      |                   | 150               |                  | 34                               | 77             | 102            | 113            | 229                 | 8            | 0.24               | MICL 009 150 14 XXX |
|      |                   | 170               |                  | 40                               | 90             | 118            | 132            | 267                 | 9            | 0.27               | MICL 009 170 14 XXX |
|      |                   | 190               |                  | 45                               | 102            | 135            | 150            | 304                 | 10           | 0.30               | MICL 009 190 14 XXX |
|      |                   | 210               |                  | 51                               | 115            | 152            | 169            | 342                 | 11           | 0.34               | MICL 009 210 14 XXX |
|      |                   | 230               |                  | 57                               | 128            | 169            | 188            | 381                 | 12           | 0.37               | MICL 009 230 14 XXX |
|      |                   | 250               |                  | 63                               | 141            | 186            | 207            | 419                 | 13           | 0.40               | MICL 009 250 14 XXX |
|      |                   | 270               |                  | 68                               | 154            | 203            | 226            | 457                 | 14           | 0.43               | MICL 009 270 14 XXX |
|      |                   | 290               |                  | 74                               | 167            | 219            | 245            | 495                 | 15           | 0.46               | MICL 009 290 14 XXX |
|      |                   | 310               |                  | 80                               | 179            | 236            | 264            | 533                 | 16           | 0.50               | MICL 009 310 14 XXX |
|      |                   | 330               |                  | 85                               | 192            | 253            | 282            | 571                 | 17           | 0.53               | MICL 009 330 14 XXX |
|      |                   | 350               |                  | 91                               | 205            | 270            | 301            | 609                 | 18           | 0.56               | MICL 009 350 14 XXX |
|      |                   | 370               |                  | 97                               | 218            | 287            | 320            | 647                 | 19           | 0.59               | MICL 009 370 14 XXX |
|      |                   | 390               |                  | 102                              | 231            | 304            | 339            | 685                 | 20           | 0.62               | MICL 009 390 14 XXX |
| 410  | 108               | 243               | 321              | 358                              | 723            | 21             | 0.66           | MICL 009 410 14 XXX |              |                    |                     |
| 430  | 114               | 256               | 337              | 376                              | 761            | 22             | 0.69           | MICL 009 430 14 XXX |              |                    |                     |
| 450  | 119               | 269               | 355              | 396                              | 800            | 23             | 0.72           | MICL 009 450 14 XXX |              |                    |                     |
| 470  | 125               | 282               | 372              | 414                              | 838            | 24             | 0.75           | MICL 009 470 14 XXX |              |                    |                     |
| 490  | 131               | 295               | 388              | 433                              | 875            | 24             | 0.78           | MICL 009 490 14 XXX |              |                    |                     |
| MICL | 009               | 070               | 18               | 13                               | 30             | 40             | 45             | 90                  | 5            | 0.22               | MICL 009 070 18 XXX |
|      |                   | 080               |                  | 17                               | 38             | 50             | 56             | 113                 | 6            | 0.26               | MICL 009 080 18 XXX |
|      |                   | 090               |                  | 20                               | 45             | 60             | 67             | 135                 | 6            | 0.29               | MICL 009 090 18 XXX |
|      |                   | 100               |                  | 24                               | 53             | 70             | 78             | 158                 | 7            | 0.32               | MICL 009 100 18 XXX |
|      |                   | 110               |                  | 27                               | 61             | 80             | 89             | 180                 | 7            | 0.35               | MICL 009 110 18 XXX |
|      |                   | 120               |                  | 30                               | 68             | 90             | 100            | 203                 | 8            | 0.38               | MICL 009 120 18 XXX |
|      |                   | 130               |                  | 34                               | 76             | 100            | 111            | 225                 | 8            | 0.42               | MICL 009 130 18 XXX |
|      |                   | 150               |                  | 40                               | 91             | 120            | 134            | 271                 | 9            | 0.48               | MICL 009 150 18 XXX |
|      |                   | 170               |                  | 47                               | 106            | 140            | 156            | 316                 | 10           | 0.54               | MICL 009 170 18 XXX |
|      |                   | 190               |                  | 54                               | 121            | 160            | 178            | 360                 | 11           | 0.61               | MICL 009 190 18 XXX |
|      |                   | 210               |                  | 61                               | 137            | 180            | 201            | 406                 | 13           | 0.67               | MICL 009 210 18 XXX |
|      |                   | 230               |                  | 67                               | 152            | 200            | 223            | 451                 | 14           | 0.74               | MICL 009 230 18 XXX |
|      |                   | 250               |                  | 74                               | 167            | 220            | 245            | 496                 | 15           | 0.80               | MICL 009 250 18 XXX |
|      |                   | 270               |                  | 81                               | 182            | 240            | 268            | 541                 | 16           | 0.86               | MICL 009 270 18 XXX |
|      |                   | 290               |                  | 87                               | 197            | 260            | 290            | 586                 | 17           | 0.93               | MICL 009 290 18 XXX |
|      |                   | 310               |                  | 94                               | 212            | 280            | 312            | 631                 | 18           | 0.99               | MICL 009 310 18 XXX |
|      |                   | 330               |                  | 101                              | 228            | 300            | 334            | 676                 | 19           | 1.06               | MICL 009 330 18 XXX |
|      |                   | 350               |                  | 108                              | 243            | 320            | 357            | 722                 | 20           | 1.12               | MICL 009 350 18 XXX |
|      |                   | 370               |                  | 114                              | 258            | 340            | 379            | 767                 | 21           | 1.18               | MICL 009 370 18 XXX |
|      |                   | 390               |                  | 121                              | 273            | 360            | 401            | 811                 | 22           | 1.25               | MICL 009 390 18 XXX |
| 410  | 128               | 288               | 379              | 423                              | 856            | 23             | 1.31           | MICL 009 410 18 XXX |              |                    |                     |
| 430  | 135               | 304               | 400              | 446                              | 902            | 24             | 1.38           | MICL 009 430 18 XXX |              |                    |                     |
| 450  | 141               | 319               | 420              | 468                              | 947            | 25             | 1.44           | MICL 009 450 18 XXX |              |                    |                     |
| 470  | 148               | 334               | 440              | 491                              | 992            | 26             | 1.50           | MICL 009 470 18 XXX |              |                    |                     |
| 490  | 155               | 349               | 460              | 513                              | 1037           | 27             | 1.57           | MICL 009 490 18 XXX |              |                    |                     |

\* measured in accordance with EN442

fill in grille code |

# MINI CANAL

# HEIGHT 009



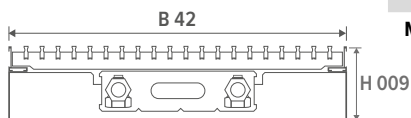
| MICL     | HEIGHT<br>H<br>cm | LENGTH<br>L<br>cm | WIDTH<br>B<br>cm | HEATING<br>Room temperature 20°C |                |                |                |                     | WEIGHT<br>kg        | WATER CONTENT<br>L  | ORDER CODE |
|----------|-------------------|-------------------|------------------|----------------------------------|----------------|----------------|----------------|---------------------|---------------------|---------------------|------------|
|          |                   |                   |                  | 35/30<br>Watts                   | 45/40<br>Watts | 50/45<br>Watts | 55/45<br>Watts | 75/65<br>Watts      |                     |                     |            |
| MICL 009 | 070               | 26                | 18               | 40                               | 53             | 59             | 119            | 7                   | 0.22                | MICL 009 070 26 XXX |            |
|          | 080               | 22                | 50               | 66                               | 73             | 148            | 8              | 0.26                | MICL 009 080 26 XXX |                     |            |
|          | 090               | 27                | 60               | 79                               | 88             | 178            | 8              | 0.29                | MICL 009 090 26 XXX |                     |            |
|          | 100               | 31                | 70               | 92                               | 102            | 207            | 9              | 0.32                | MICL 009 100 26 XXX |                     |            |
|          | 110               | 35                | 80               | 105                              | 117            | 237            | 10             | 0.35                | MICL 009 110 26 XXX |                     |            |
|          | 120               | 40                | 90               | 118                              | 132            | 267            | 10             | 0.38                | MICL 009 120 26 XXX |                     |            |
|          | 130               | 44                | 100              | 131                              | 146            | 296            | 11             | 0.42                | MICL 009 130 26 XXX |                     |            |
|          | 150               | 53                | 120              | 158                              | 176            | 356            | 13             | 0.48                | MICL 009 150 26 XXX |                     |            |
|          | 170               | 62                | 140              | 184                              | 205            | 415            | 14             | 0.54                | MICL 009 170 26 XXX |                     |            |
|          | 190               | 71                | 160              | 210                              | 234            | 474            | 15             | 0.61                | MICL 009 190 26 XXX |                     |            |
|          | 210               | 80                | 180              | 237                              | 264            | 534            | 17             | 0.67                | MICL 009 210 26 XXX |                     |            |
|          | 230               | 89                | 200              | 263                              | 293            | 593            | 18             | 0.74                | MICL 009 230 26 XXX |                     |            |
|          | 250               | 97                | 220              | 289                              | 322            | 652            | 20             | 0.80                | MICL 009 250 26 XXX |                     |            |
|          | 270               | 106               | 239              | 315                              | 352            | 711            | 21             | 0.86                | MICL 009 270 26 XXX |                     |            |
|          | 290               | 115               | 260              | 342                              | 381            | 771            | 23             | 0.93                | MICL 009 290 26 XXX |                     |            |
|          | 310               | 124               | 279              | 368                              | 411            | 830            | 24             | 0.99                | MICL 009 310 26 XXX |                     |            |
|          | 330               | 133               | 299              | 394                              | 440            | 889            | 25             | 1.06                | MICL 009 330 26 XXX |                     |            |
| 350      | 141               | 319               | 420              | 469                              | 948            | 27             | 1.12           | MICL 009 350 26 XXX |                     |                     |            |
| 370      | 150               | 339               | 447              | 499                              | 1008           | 28             | 1.18           | MICL 009 370 26 XXX |                     |                     |            |
| 390      | 159               | 359               | 473              | 528                              | 1067           | 30             | 1.25           | MICL 009 390 26 XXX |                     |                     |            |
| 410      | 168               | 379               | 499              | 557                              | 1126           | 31             | 1.31           | MICL 009 410 26 XXX |                     |                     |            |
| 430      | 177               | 399               | 526              | 587                              | 1186           | 33             | 1.38           | MICL 009 430 26 XXX |                     |                     |            |
| 450      | 186               | 419               | 552              | 616                              | 1245           | 34             | 1.44           | MICL 009 450 26 XXX |                     |                     |            |
| 470      | 195               | 439               | 578              | 645                              | 1304           | 35             | 1.50           | MICL 009 470 26 XXX |                     |                     |            |
| 490      | 203               | 459               | 604              | 674                              | 1363           | 37             | 1.57           | MICL 009 490 26 XXX |                     |                     |            |
| MICL 009 | 070               | 34                | 23               | 52                               | 68             | 76             | 154            | 8                   | 0.34                | MICL 009 070 34 XXX |            |
|          | 080               | 29                | 65               | 86                               | 95             | 193            | 9              | 0.38                | MICL 009 080 34 XXX |                     |            |
|          | 090               | 34                | 78               | 102                              | 114            | 231            | 10             | 0.43                | MICL 009 090 34 XXX |                     |            |
|          | 100               | 40                | 91               | 119                              | 133            | 269            | 11             | 0.48                | MICL 009 100 34 XXX |                     |            |
|          | 110               | 46                | 103              | 136                              | 152            | 307            | 12             | 0.53                | MICL 009 110 34 XXX |                     |            |
|          | 120               | 52                | 116              | 153                              | 171            | 346            | 13             | 0.58                | MICL 009 120 34 XXX |                     |            |
|          | 130               | 57                | 130              | 171                              | 190            | 385            | 14             | 0.62                | MICL 009 130 34 XXX |                     |            |
|          | 150               | 69                | 156              | 205                              | 229            | 462            | 15             | 0.72                | MICL 009 150 34 XXX |                     |            |
|          | 170               | 80                | 181              | 239                              | 266            | 538            | 17             | 0.82                | MICL 009 170 34 XXX |                     |            |
|          | 190               | 92                | 207              | 273                              | 304            | 615            | 19             | 0.91                | MICL 009 190 34 XXX |                     |            |
|          | 210               | 103               | 233              | 307                              | 342            | 692            | 21             | 1.01                | MICL 009 210 34 XXX |                     |            |
|          | 230               | 115               | 259              | 341                              | 380            | 769            | 22             | 1.10                | MICL 009 230 34 XXX |                     |            |
|          | 250               | 126               | 285              | 375                              | 418            | 846            | 24             | 1.20                | MICL 009 250 34 XXX |                     |            |
|          | 270               | 138               | 311              | 409                              | 457            | 923            | 26             | 1.30                | MICL 009 270 34 XXX |                     |            |
|          | 290               | 149               | 337              | 443                              | 495            | 1000           | 28             | 1.39                | MICL 009 290 34 XXX |                     |            |
|          | 310               | 161               | 362              | 477                              | 532            | 1076           | 30             | 1.49                | MICL 009 310 34 XXX |                     |            |
|          | 330               | 172               | 389              | 512                              | 571            | 1154           | 31             | 1.58                | MICL 009 330 34 XXX |                     |            |
| 350      | 184               | 414               | 546              | 609                              | 1231           | 33             | 1.68           | MICL 009 350 34 XXX |                     |                     |            |
| 370      | 195               | 440               | 579              | 646                              | 1307           | 35             | 1.78           | MICL 009 370 34 XXX |                     |                     |            |
| 390      | 207               | 466               | 614              | 685                              | 1385           | 37             | 1.87           | MICL 009 390 34 XXX |                     |                     |            |
| 410      | 218               | 492               | 648              | 723                              | 1461           | 38             | 1.97           | MICL 009 410 34 XXX |                     |                     |            |
| 430      | 230               | 518               | 682              | 761                              | 1538           | 40             | 2.06           | MICL 009 430 34 XXX |                     |                     |            |
| 450      | 241               | 544               | 716              | 799                              | 1615           | 42             | 2.16           | MICL 009 450 34 XXX |                     |                     |            |
| 470      | 253               | 570               | 750              | 837                              | 1692           | 44             | 2.26           | MICL 009 470 34 XXX |                     |                     |            |
| 490      | 264               | 596               | 784              | 875                              | 1769           | 45             | 2.35           | MICL 009 490 34 XXX |                     |                     |            |

\* measured in accordance with EN442

fill in grille code |

# MINI CANAL

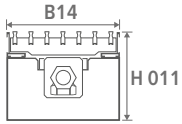
# HEIGHT 009



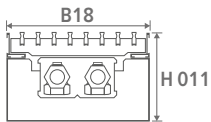
| MICL | HEIGHT<br>H<br>cm | LENGTH<br>L<br>cm | WIDTH<br>B<br>cm | HEATING<br>Room temperature 20°C |                |                |                |                | WEIGHT<br>kg | WATER CONTENT<br>L | ORDER CODE          |
|------|-------------------|-------------------|------------------|----------------------------------|----------------|----------------|----------------|----------------|--------------|--------------------|---------------------|
|      |                   |                   |                  | 35/30<br>Watts                   | 45/40<br>Watts | 50/45<br>Watts | 55/45<br>Watts | 75/65<br>Watts |              |                    |                     |
|      | <b>009</b>        | <b>070</b>        | <b>42</b>        | 33                               | 75             | 98             | 110            | 222            | 10           | 0.44               | MICL 009 070 42 XXX |
|      |                   | <b>080</b>        |                  | 41                               | 94             | 123            | 138            | 278            | 11           | 0.50               | MICL 009 080 42 XXX |
|      |                   | <b>090</b>        |                  | 50                               | 112            | 148            | 165            | 333            | 12           | 0.57               | MICL 009 090 42 XXX |
|      |                   | <b>100</b>        |                  | 58                               | 131            | 172            | 192            | 388            | 13           | 0.63               | MICL 009 100 42 XXX |
|      |                   | <b>110</b>        |                  | 66                               | 150            | 197            | 220            | 445            | 14           | 0.69               | MICL 009 110 42 XXX |
|      |                   | <b>120</b>        |                  | 75                               | 168            | 222            | 247            | 500            | 15           | 0.76               | MICL 009 120 42 XXX |
|      |                   | <b>130</b>        |                  | 83                               | 187            | 246            | 275            | 555            | 16           | 0.82               | MICL 009 130 42 XXX |
|      |                   | <b>150</b>        |                  | 99                               | 224            | 295            | 329            | 666            | 18           | 0.95               | MICL 009 150 42 XXX |
|      |                   | <b>170</b>        |                  | 116                              | 262            | 345            | 385            | 778            | 20           | 1.07               | MICL 009 170 42 XXX |
|      |                   | <b>190</b>        |                  | 133                              | 299            | 394            | 439            | 888            | 22           | 1.20               | MICL 009 190 42 XXX |
|      |                   | <b>210</b>        |                  | 149                              | 337            | 443            | 495            | 1000           | 25           | 1.32               | MICL 009 210 42 XXX |
|      |                   | <b>230</b>        |                  | 166                              | 374            | 493            | 550            | 1111           | 27           | 1.45               | MICL 009 230 42 XXX |
|      |                   | <b>250</b>        |                  | 182                              | 411            | 541            | 604            | 1221           | 29           | 1.58               | MICL 009 250 42 XXX |
|      |                   | <b>270</b>        |                  | 199                              | 449            | 591            | 659            | 1333           | 31           | 1.70               | MICL 009 270 42 XXX |
|      |                   | <b>290</b>        |                  | 216                              | 486            | 640            | 714            | 1444           | 33           | 1.83               | MICL 009 290 42 XXX |
|      |                   | <b>310</b>        |                  | 232                              | 524            | 689            | 769            | 1555           | 35           | 1.95               | MICL 009 310 42 XXX |
|      |                   | <b>330</b>        |                  | 249                              | 561            | 739            | 824            | 1666           | 37           | 2.08               | MICL 009 330 42 XXX |
|      |                   | <b>350</b>        |                  | 265                              | 598            | 788            | 879            | 1777           | 39           | 2.21               | MICL 009 350 42 XXX |
|      |                   | <b>370</b>        |                  | 282                              | 636            | 837            | 934            | 1888           | 41           | 2.33               | MICL 009 370 42 XXX |
|      |                   | <b>390</b>        |                  | 298                              | 673            | 886            | 989            | 1999           | 44           | 2.46               | MICL 009 390 42 XXX |
|      |                   | <b>410</b>        |                  | 315                              | 711            | 936            | 1044           | 2111           | 46           | 2.58               | MICL 009 410 42 XXX |
|      |                   | <b>430</b>        |                  | 332                              | 748            | 985            | 1099           | 2221           | 48           | 2.71               | MICL 009 430 42 XXX |
|      |                   | <b>450</b>        |                  | 348                              | 785            | 1034           | 1153           | 2332           | 50           | 2.84               | MICL 009 450 42 XXX |
|      |                   | <b>470</b>        |                  | 365                              | 823            | 1083           | 1209           | 2444           | 52           | 2.96               | MICL 009 470 42 XXX |
|      |                   | <b>490</b>        |                  | 381                              | 860            | 1133           | 1264           | 2555           | 54           | 3.09               | MICL 009 490 42 XXX |

\* measured in accordance with EN442

fill in grille code |



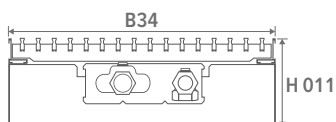
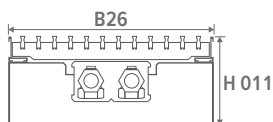
opposite end connections



| MICL | HEIGHT<br>H<br>cm | LENGTH<br>L<br>cm | WIDTH<br>B<br>cm | HEATING<br>Room temperature 20°C |                |                |                     |                | WEIGHT<br>kg | WATER CONTENT<br>L | ORDER CODE          |
|------|-------------------|-------------------|------------------|----------------------------------|----------------|----------------|---------------------|----------------|--------------|--------------------|---------------------|
|      |                   |                   |                  | 35/30<br>Watts                   | 45/40<br>Watts | 50/45<br>Watts | 55/45<br>Watts      | 75/65<br>Watts |              |                    |                     |
| MICL | 011               | 070               | 14               | 13                               | 29             | 39             | 43                  | 87             | 5            | 0.11               | MICL 011 070 14 XXX |
|      |                   |                   |                  | 16                               | 37             | 48             | 54                  | 109            | 5            | 0.13               | MICL 011 080 14 XXX |
|      |                   |                   |                  | 20                               | 44             | 58             | 65                  | 131            | 6            | 0.14               | MICL 011 090 14 XXX |
|      |                   |                   |                  | 23                               | 52             | 68             | 76                  | 153            | 6            | 0.16               | MICL 011 100 14 XXX |
|      |                   |                   |                  | 26                               | 59             | 78             | 87                  | 175            | 7            | 0.18               | MICL 011 110 14 XXX |
|      |                   |                   |                  | 29                               | 66             | 87             | 97                  | 197            | 7            | 0.19               | MICL 011 120 14 XXX |
|      |                   |                   |                  | 33                               | 73             | 97             | 108                 | 218            | 8            | 0.21               | MICL 011 130 14 XXX |
|      |                   |                   |                  | 39                               | 88             | 116            | 130                 | 262            | 9            | 0.24               | MICL 011 150 14 XXX |
|      |                   |                   |                  | 46                               | 103            | 136            | 151                 | 306            | 10           | 0.27               | MICL 011 170 14 XXX |
|      |                   |                   |                  | 52                               | 117            | 155            | 173                 | 349            | 11           | 0.30               | MICL 011 190 14 XXX |
|      |                   |                   |                  | 59                               | 132            | 174            | 194                 | 393            | 12           | 0.34               | MICL 011 210 14 XXX |
|      |                   |                   |                  | 65                               | 147            | 194            | 216                 | 437            | 13           | 0.37               | MICL 011 230 14 XXX |
|      |                   |                   |                  | 72                               | 162            | 213            | 237                 | 480            | 14           | 0.40               | MICL 011 250 14 XXX |
|      |                   |                   |                  | 78                               | 176            | 232            | 259                 | 524            | 15           | 0.43               | MICL 011 270 14 XXX |
|      |                   |                   |                  | 85                               | 191            | 252            | 281                 | 568            | 16           | 0.46               | MICL 011 290 14 XXX |
|      |                   |                   |                  | 91                               | 206            | 271            | 303                 | 612            | 17           | 0.50               | MICL 011 310 14 XXX |
|      |                   |                   |                  | 98                               | 221            | 290            | 324                 | 655            | 18           | 0.53               | MICL 011 330 14 XXX |
|      |                   |                   |                  | 104                              | 235            | 310            | 346                 | 699            | 19           | 0.56               | MICL 011 350 14 XXX |
|      |                   |                   |                  | 111                              | 250            | 329            | 368                 | 743            | 20           | 0.59               | MICL 011 370 14 XXX |
|      |                   |                   |                  | 117                              | 265            | 348            | 389                 | 786            | 21           | 0.62               | MICL 011 390 14 XXX |
| 124  | 279               | 368               | 411              | 830                              | 22             | 0.66           | MICL 011 410 14 XXX |                |              |                    |                     |
| 130  | 294               | 387               | 432              | 874                              | 23             | 0.69           | MICL 011 430 14 XXX |                |              |                    |                     |
| 137  | 309               | 407               | 454              | 917                              | 24             | 0.72           | MICL 011 450 14 XXX |                |              |                    |                     |
| 143  | 324               | 426               | 475              | 961                              | 25             | 0.75           | MICL 011 470 14 XXX |                |              |                    |                     |
| 150  | 338               | 446               | 497              | 1005                             | 26             | 0.78           | MICL 011 490 14 XXX |                |              |                    |                     |
| MICL | 011               | 070               | 18               | 16                               | 35             | 46             | 51                  | 104            | 5            | 0.22               | MICL 011 070 18 XXX |
|      |                   |                   |                  | 19                               | 43             | 57             | 64                  | 129            | 6            | 0.26               | MICL 011 080 18 XXX |
|      |                   |                   |                  | 23                               | 52             | 69             | 77                  | 155            | 7            | 0.29               | MICL 011 090 18 XXX |
|      |                   |                   |                  | 27                               | 61             | 80             | 90                  | 181            | 7            | 0.32               | MICL 011 100 18 XXX |
|      |                   |                   |                  | 31                               | 70             | 92             | 102                 | 207            | 8            | 0.35               | MICL 011 110 18 XXX |
|      |                   |                   |                  | 35                               | 78             | 103            | 115                 | 233            | 8            | 0.38               | MICL 011 120 18 XXX |
|      |                   |                   |                  | 39                               | 87             | 115            | 128                 | 259            | 9            | 0.42               | MICL 011 130 18 XXX |
|      |                   |                   |                  | 46                               | 104            | 137            | 153                 | 310            | 10           | 0.48               | MICL 011 150 18 XXX |
|      |                   |                   |                  | 54                               | 122            | 161            | 180                 | 363            | 11           | 0.54               | MICL 011 170 18 XXX |
|      |                   |                   |                  | 62                               | 139            | 184            | 205                 | 414            | 12           | 0.61               | MICL 011 190 18 XXX |
|      |                   |                   |                  | 70                               | 157            | 207            | 230                 | 466            | 13           | 0.67               | MICL 011 210 18 XXX |
|      |                   |                   |                  | 77                               | 174            | 230            | 256                 | 518            | 15           | 0.74               | MICL 011 230 18 XXX |
|      |                   |                   |                  | 85                               | 192            | 252            | 281                 | 569            | 16           | 0.80               | MICL 011 250 18 XXX |
|      |                   |                   |                  | 93                               | 209            | 276            | 308                 | 622            | 17           | 0.86               | MICL 011 270 18 XXX |
|      |                   |                   |                  | 100                              | 227            | 298            | 333                 | 673            | 18           | 0.93               | MICL 011 290 18 XXX |
|      |                   |                   |                  | 108                              | 244            | 321            | 359                 | 725            | 19           | 0.99               | MICL 011 310 18 XXX |
|      |                   |                   |                  | 116                              | 262            | 344            | 384                 | 777            | 20           | 1.06               | MICL 011 330 18 XXX |
|      |                   |                   |                  | 124                              | 279            | 367            | 410                 | 828            | 21           | 1.12               | MICL 011 350 18 XXX |
|      |                   |                   |                  | 131                              | 297            | 391            | 436                 | 881            | 23           | 1.18               | MICL 011 370 18 XXX |
|      |                   |                   |                  | 139                              | 314            | 413            | 461                 | 932            | 24           | 1.25               | MICL 011 390 18 XXX |
| 147  | 331               | 436               | 487              | 984                              | 25             | 1.31           | MICL 011 410 18 XXX |                |              |                    |                     |
| 155  | 349               | 459               | 512              | 1036                             | 26             | 1.38           | MICL 011 430 18 XXX |                |              |                    |                     |
| 162  | 366               | 482               | 538              | 1087                             | 27             | 1.44           | MICL 011 450 18 XXX |                |              |                    |                     |
| 170  | 384               | 505               | 564              | 1140                             | 28             | 1.50           | MICL 011 470 18 XXX |                |              |                    |                     |
| 178  | 401               | 528               | 589              | 1191                             | 29             | 1.57           | MICL 011 490 18 XXX |                |              |                    |                     |

\* measured in accordance with EN442

fill in grille code |



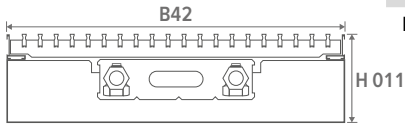
| MICL | HEIGHT<br>H<br>cm | LENGTH<br>L<br>cm | WIDTH<br>B<br>cm | HEATING<br>Room temperature 20°C |                |                |                |                     | WEIGHT<br>kg | WATER CONTENT<br>L | ORDER CODE          |
|------|-------------------|-------------------|------------------|----------------------------------|----------------|----------------|----------------|---------------------|--------------|--------------------|---------------------|
|      |                   |                   |                  | 35/30<br>Watts                   | 45/40<br>Watts | 50/45<br>Watts | 55/45<br>Watts | 75/65<br>Watts      |              |                    |                     |
| MICL | 011               | 070               | 26               | 21                               | 47             | 62             | 69             | 140                 | 7            | 0.22               | MICL 011 070 26 XXX |
|      |                   | 080               |                  | 26                               | 59             | 78             | 87             | 175                 | 8            | 0.26               | MICL 011 080 26 XXX |
|      |                   | 090               |                  | 31                               | 71             | 93             | 104            | 210                 | 9            | 0.29               | MICL 011 090 26 XXX |
|      |                   | 100               |                  | 37                               | 82             | 109            | 121            | 245                 | 9            | 0.32               | MICL 011 100 26 XXX |
|      |                   | 110               |                  | 42                               | 94             | 124            | 138            | 279                 | 10           | 0.35               | MICL 011 110 26 XXX |
|      |                   | 120               |                  | 47                               | 106            | 139            | 155            | 314                 | 11           | 0.38               | MICL 011 120 26 XXX |
|      |                   | 130               |                  | 52                               | 117            | 155            | 173            | 349                 | 12           | 0.42               | MICL 011 130 26 XXX |
|      |                   | 150               |                  | 63                               | 141            | 186            | 208            | 420                 | 13           | 0.48               | MICL 011 150 26 XXX |
|      |                   | 170               |                  | 73                               | 165            | 217            | 242            | 489                 | 15           | 0.54               | MICL 011 170 26 XXX |
|      |                   | 190               |                  | 83                               | 188            | 248            | 276            | 559                 | 16           | 0.61               | MICL 011 190 26 XXX |
|      |                   | 210               |                  | 94                               | 212            | 279            | 311            | 629                 | 18           | 0.67               | MICL 011 210 26 XXX |
|      |                   | 230               |                  | 104                              | 235            | 310            | 346            | 699                 | 19           | 0.74               | MICL 011 230 26 XXX |
|      |                   | 250               |                  | 115                              | 259            | 341            | 380            | 769                 | 21           | 0.80               | MICL 011 250 26 XXX |
|      |                   | 270               |                  | 125                              | 282            | 372            | 415            | 839                 | 22           | 0.86               | MICL 011 270 26 XXX |
|      |                   | 290               |                  | 136                              | 306            | 403            | 450            | 909                 | 24           | 0.93               | MICL 011 290 26 XXX |
|      |                   | 310               |                  | 146                              | 329            | 434            | 484            | 978                 | 25           | 0.99               | MICL 011 310 26 XXX |
|      |                   | 330               |                  | 156                              | 353            | 465            | 518            | 1048                | 27           | 1.06               | MICL 011 330 26 XXX |
|      |                   | 350               |                  | 167                              | 377            | 496            | 553            | 1119                | 28           | 1.12               | MICL 011 350 26 XXX |
|      |                   | 370               |                  | 177                              | 400            | 527            | 588            | 1188                | 30           | 1.18               | MICL 011 370 26 XXX |
|      |                   | 390               |                  | 188                              | 424            | 558            | 622            | 1258                | 31           | 1.25               | MICL 011 390 26 XXX |
| 410  | 198               | 447               | 589              | 657                              | 1328           | 33             | 1.31           | MICL 011 410 26 XXX |              |                    |                     |
| 430  | 209               | 471               | 620              | 691                              | 1398           | 34             | 1.38           | MICL 011 430 26 XXX |              |                    |                     |
| 450  | 219               | 494               | 651              | 726                              | 1468           | 36             | 1.44           | MICL 011 450 26 XXX |              |                    |                     |
| 470  | 229               | 517               | 681              | 760                              | 1537           | 37             | 1.50           | MICL 011 470 26 XXX |              |                    |                     |
| 490  | 240               | 541               | 713              | 795                              | 1608           | 39             | 1.57           | MICL 011 490 26 XXX |              |                    |                     |
| MICL | 011               | 070               | 34               | 27                               | 61             | 81             | 90             | 182                 | 9            | 0.34               | MICL 011 070 34 XXX |
|      |                   | 080               |                  | 34                               | 76             | 101            | 112            | 227                 | 10           | 0.38               | MICL 011 080 34 XXX |
|      |                   | 090               |                  | 41                               | 92             | 121            | 135            | 272                 | 11           | 0.43               | MICL 011 090 34 XXX |
|      |                   | 100               |                  | 47                               | 107            | 141            | 157            | 317                 | 12           | 0.48               | MICL 011 100 34 XXX |
|      |                   | 110               |                  | 54                               | 122            | 161            | 180            | 363                 | 12           | 0.53               | MICL 011 110 34 XXX |
|      |                   | 120               |                  | 61                               | 138            | 181            | 202            | 409                 | 13           | 0.58               | MICL 011 120 34 XXX |
|      |                   | 130               |                  | 68                               | 153            | 201            | 225            | 454                 | 14           | 0.62               | MICL 011 130 34 XXX |
|      |                   | 150               |                  | 81                               | 183            | 241            | 269            | 544                 | 16           | 0.72               | MICL 011 150 34 XXX |
|      |                   | 170               |                  | 95                               | 214            | 282            | 315            | 636                 | 18           | 0.82               | MICL 011 170 34 XXX |
|      |                   | 190               |                  | 108                              | 244            | 322            | 359            | 726                 | 20           | 0.91               | MICL 011 190 34 XXX |
|      |                   | 210               |                  | 122                              | 275            | 362            | 404            | 817                 | 22           | 1.01               | MICL 011 210 34 XXX |
|      |                   | 230               |                  | 136                              | 306            | 403            | 449            | 908                 | 24           | 1.10               | MICL 011 230 34 XXX |
|      |                   | 250               |                  | 149                              | 336            | 442            | 494            | 998                 | 25           | 1.20               | MICL 011 250 34 XXX |
|      |                   | 270               |                  | 163                              | 367            | 483            | 539            | 1090                | 27           | 1.30               | MICL 011 270 34 XXX |
|      |                   | 290               |                  | 176                              | 397            | 523            | 584            | 1180                | 29           | 1.39               | MICL 011 290 34 XXX |
|      |                   | 310               |                  | 190                              | 428            | 563            | 629            | 1271                | 31           | 1.49               | MICL 011 310 34 XXX |
|      |                   | 330               |                  | 203                              | 459            | 604            | 674            | 1362                | 33           | 1.58               | MICL 011 330 34 XXX |
|      |                   | 350               |                  | 217                              | 489            | 644            | 718            | 1452                | 35           | 1.68               | MICL 011 350 34 XXX |
|      |                   | 370               |                  | 230                              | 520            | 684            | 764            | 1544                | 37           | 1.78               | MICL 011 370 34 XXX |
|      |                   | 390               |                  | 244                              | 550            | 724            | 808            | 1634                | 38           | 1.87               | MICL 011 390 34 XXX |
| 410  | 257               | 581               | 765              | 853                              | 1725           | 40             | 1.97           | MICL 011 410 34 XXX |              |                    |                     |
| 430  | 271               | 611               | 805              | 898                              | 1816           | 42             | 2.06           | MICL 011 430 34 XXX |              |                    |                     |
| 450  | 284               | 642               | 845              | 943                              | 1906           | 44             | 2.16           | MICL 011 450 34 XXX |              |                    |                     |
| 470  | 298               | 673               | 886              | 988                              | 1998           | 46             | 2.26           | MICL 011 470 34 XXX |              |                    |                     |
| 490  | 312               | 703               | 926              | 1033                             | 2088           | 48             | 2.35           | MICL 011 490 34 XXX |              |                    |                     |

\* measured in accordance with EN442

fill in grille code |

# MINI CANAL

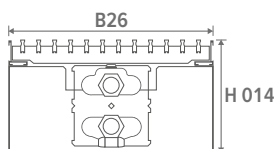
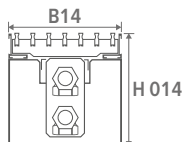
# HEIGHT 011



| MICAL | HEIGHT<br>H<br>cm | LENGTH<br>L<br>cm | WIDTH<br>B<br>cm | HEATING<br>Room temperature 20°C |                |                |                |                | WEIGHT<br>kg | WATER CONTENT<br>L | ORDER CODE          |
|-------|-------------------|-------------------|------------------|----------------------------------|----------------|----------------|----------------|----------------|--------------|--------------------|---------------------|
|       |                   |                   |                  | 35/30<br>Watts                   | 45/40<br>Watts | 50/45<br>Watts | 55/45<br>Watts | 75/65<br>Watts |              |                    |                     |
|       | <b>011</b>        | <b>070</b>        | <b>42</b>        | 38                               | 86             | 113            | 126            | 255            | 10           | 0.44               | MICL 011 070 42 XXX |
|       |                   | <b>080</b>        |                  | 48                               | 107            | 141            | 158            | 319            | 11           | 0.50               | MICL 011 080 42 XXX |
|       |                   | <b>090</b>        |                  | 57                               | 129            | 170            | 189            | 383            | 12           | 0.57               | MICL 011 090 42 XXX |
|       |                   | <b>100</b>        |                  | 67                               | 150            | 198            | 221            | 447            | 14           | 0.63               | MICL 011 100 42 XXX |
|       |                   | <b>110</b>        |                  | 76                               | 172            | 226            | 252            | 510            | 15           | 0.69               | MICL 011 110 42 XXX |
|       |                   | <b>120</b>        |                  | 86                               | 193            | 254            | 284            | 574            | 16           | 0.76               | MICL 011 120 42 XXX |
|       |                   | <b>130</b>        |                  | 95                               | 215            | 283            | 316            | 638            | 17           | 0.82               | MICL 011 130 42 XXX |
|       |                   | <b>150</b>        |                  | 114                              | 258            | 340            | 379            | 766            | 19           | 0.95               | MICL 011 150 42 XXX |
|       |                   | <b>170</b>        |                  | 133                              | 301            | 396            | 442            | 893            | 21           | 1.07               | MICL 011 170 42 XXX |
|       |                   | <b>190</b>        |                  | 152                              | 344            | 453            | 505            | 1021           | 24           | 1.20               | MICL 011 190 42 XXX |
|       |                   | <b>210</b>        |                  | 171                              | 387            | 509            | 568            | 1148           | 26           | 1.32               | MICL 011 210 42 XXX |
|       |                   | <b>230</b>        |                  | 190                              | 430            | 566            | 631            | 1276           | 28           | 1.45               | MICL 011 230 42 XXX |
|       |                   | <b>250</b>        |                  | 210                              | 473            | 622            | 694            | 1404           | 30           | 1.58               | MICL 011 250 42 XXX |
|       |                   | <b>270</b>        |                  | 229                              | 515            | 679            | 757            | 1531           | 32           | 1.70               | MICL 011 270 42 XXX |
|       |                   | <b>290</b>        |                  | 248                              | 559            | 735            | 821            | 1659           | 35           | 1.83               | MICL 011 290 42 XXX |
|       |                   | <b>310</b>        |                  | 267                              | 601            | 792            | 883            | 1786           | 37           | 1.95               | MICL 011 310 42 XXX |
|       |                   | <b>330</b>        |                  | 286                              | 644            | 849            | 947            | 1914           | 39           | 2.08               | MICL 011 330 42 XXX |
|       |                   | <b>350</b>        |                  | 305                              | 687            | 905            | 1010           | 2042           | 41           | 2.21               | MICL 011 350 42 XXX |
|       |                   | <b>370</b>        |                  | 324                              | 730            | 962            | 1073           | 2169           | 43           | 2.33               | MICL 011 370 42 XXX |
|       |                   | <b>390</b>        |                  | 343                              | 773            | 1018           | 1136           | 2297           | 46           | 2.46               | MICL 011 390 42 XXX |
|       |                   | <b>410</b>        |                  | 362                              | 816            | 1075           | 1199           | 2424           | 48           | 2.58               | MICL 011 410 42 XXX |
|       |                   | <b>430</b>        |                  | 381                              | 859            | 1131           | 1262           | 2552           | 50           | 2.71               | MICL 011 430 42 XXX |
|       |                   | <b>450</b>        |                  | 400                              | 902            | 1188           | 1326           | 2680           | 52           | 2.84               | MICL 011 450 42 XXX |
|       |                   | <b>470</b>        |                  | 419                              | 945            | 1244           | 1388           | 2807           | 54           | 2.96               | MICL 011 470 42 XXX |
|       |                   | <b>490</b>        |                  | 438                              | 988            | 1301           | 1452           | 2935           | 57           | 3.09               | MICL 011 490 42 XXX |

\*measured in accordance with EN442

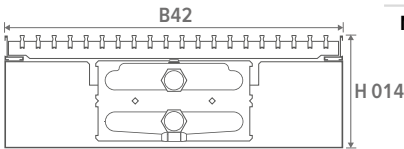
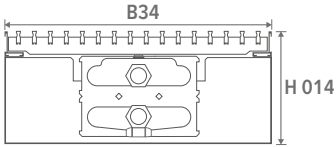
fill in grille code |



| MICL | HEIGHT<br>H | LENGTH<br>L | WIDTH<br>B | HEATING<br>Room temperature 20°C |                |                |                |                     | WEIGHT<br>kg | WATER CONTENT<br>L | ORDER CODE          |
|------|-------------|-------------|------------|----------------------------------|----------------|----------------|----------------|---------------------|--------------|--------------------|---------------------|
|      |             |             |            | 35/30<br>Watts                   | 45/40<br>Watts | 50/45<br>Watts | 55/45<br>Watts | 75/65<br>Watts      |              |                    |                     |
| MICL | 014         | 070         | 14         | 15                               | 33             | 44             | 49             | 99                  | 5            | 0.22               | MICL 014 070 14 XXX |
|      |             | 080         |            | 19                               | 42             | 55             | 61             | 124                 | 6            | 0.26               | MICL 014 080 14 XXX |
|      |             | 090         |            | 22                               | 50             | 66             | 74             | 149                 | 7            | 0.29               | MICL 014 090 14 XXX |
|      |             | 100         |            | 26                               | 59             | 77             | 86             | 174                 | 7            | 0.32               | MICL 014 100 14 XXX |
|      |             | 110         |            | 30                               | 67             | 88             | 98             | 198                 | 8            | 0.35               | MICL 014 110 14 XXX |
|      |             | 120         |            | 33                               | 75             | 99             | 110            | 223                 | 9            | 0.38               | MICL 014 120 14 XXX |
|      |             | 130         |            | 37                               | 83             | 110            | 123            | 248                 | 9            | 0.42               | MICL 014 130 14 XXX |
|      |             | 150         |            | 44                               | 100            | 132            | 147            | 298                 | 10           | 0.48               | MICL 014 150 14 XXX |
|      |             | 170         |            | 52                               | 117            | 154            | 172            | 347                 | 12           | 0.54               | MICL 014 170 14 XXX |
|      |             | 190         |            | 59                               | 134            | 176            | 196            | 397                 | 13           | 0.61               | MICL 014 190 14 XXX |
|      |             | 210         |            | 67                               | 150            | 198            | 221            | 446                 | 14           | 0.67               | MICL 014 210 14 XXX |
|      |             | 230         |            | 74                               | 167            | 220            | 245            | 496                 | 15           | 0.74               | MICL 014 230 14 XXX |
|      |             | 250         |            | 81                               | 184            | 242            | 270            | 546                 | 17           | 0.80               | MICL 014 250 14 XXX |
|      |             | 270         |            | 89                               | 200            | 264            | 294            | 595                 | 18           | 0.86               | MICL 014 270 14 XXX |
|      |             | 290         |            | 96                               | 217            | 286            | 319            | 645                 | 19           | 0.93               | MICL 014 290 14 XXX |
|      |             | 310         |            | 104                              | 234            | 308            | 343            | 694                 | 20           | 0.99               | MICL 014 310 14 XXX |
|      |             | 330         |            | 111                              | 250            | 330            | 368            | 744                 | 22           | 1.06               | MICL 014 330 14 XXX |
|      |             | 350         |            | 119                              | 267            | 352            | 393            | 794                 | 23           | 1.12               | MICL 014 350 14 XXX |
|      |             | 370         |            | 126                              | 284            | 374            | 417            | 843                 | 24           | 1.18               | MICL 014 370 14 XXX |
|      |             | 390         |            | 133                              | 301            | 396            | 442            | 893                 | 25           | 1.25               | MICL 014 390 14 XXX |
| 410  | 141         | 317         | 418        | 466                              | 942            | 26             | 1.31           | MICL 014 410 14 XXX |              |                    |                     |
| 430  | 148         | 334         | 440        | 491                              | 992            | 28             | 1.38           | MICL 014 430 14 XXX |              |                    |                     |
| 450  | 156         | 351         | 462        | 515                              | 1042           | 29             | 1.44           | MICL 014 450 14 XXX |              |                    |                     |
| 470  | 163         | 367         | 484        | 540                              | 1091           | 30             | 1.50           | MICL 014 470 14 XXX |              |                    |                     |
| 490  | 170         | 384         | 506        | 564                              | 1141           | 31             | 1.57           | MICL 014 490 14 XXX |              |                    |                     |
| MICL | 014         | 070         | 26         | 26                               | 58             | 76             | 85             | 172                 | 8            | 0.46               | MICL 014 070 26 XXX |
|      |             | 080         |            | 32                               | 72             | 95             | 106            | 215                 | 9            | 0.52               | MICL 014 080 26 XXX |
|      |             | 090         |            | 39                               | 87             | 114            | 128            | 258                 | 10           | 0.59               | MICL 014 090 26 XXX |
|      |             | 100         |            | 45                               | 101            | 133            | 149            | 301                 | 11           | 0.65               | MICL 014 100 26 XXX |
|      |             | 110         |            | 51                               | 116            | 153            | 171            | 345                 | 12           | 0.72               | MICL 014 110 26 XXX |
|      |             | 120         |            | 58                               | 131            | 172            | 192            | 388                 | 13           | 0.78               | MICL 014 120 26 XXX |
|      |             | 130         |            | 64                               | 145            | 191            | 213            | 431                 | 14           | 0.85               | MICL 014 130 26 XXX |
|      |             | 150         |            | 77                               | 174            | 229            | 255            | 516                 | 15           | 0.98               | MICL 014 150 26 XXX |
|      |             | 170         |            | 90                               | 203            | 267            | 298            | 603                 | 17           | 1.11               | MICL 014 170 26 XXX |
|      |             | 190         |            | 103                              | 232            | 305            | 341            | 689                 | 19           | 1.24               | MICL 014 190 26 XXX |
|      |             | 210         |            | 116                              | 261            | 344            | 383            | 775                 | 21           | 1.37               | MICL 014 210 26 XXX |
|      |             | 230         |            | 129                              | 290            | 382            | 426            | 861                 | 23           | 1.50               | MICL 014 230 26 XXX |
|      |             | 250         |            | 141                              | 319            | 420            | 468            | 947                 | 25           | 1.63               | MICL 014 250 26 XXX |
|      |             | 270         |            | 154                              | 348            | 458            | 511            | 1034                | 26           | 1.76               | MICL 014 270 26 XXX |
|      |             | 290         |            | 167                              | 377            | 496            | 553            | 1119                | 28           | 1.89               | MICL 014 290 26 XXX |
|      |             | 310         |            | 180                              | 406            | 535            | 597            | 1206                | 30           | 2.02               | MICL 014 310 26 XXX |
|      |             | 330         |            | 193                              | 435            | 573            | 639            | 1292                | 32           | 2.15               | MICL 014 330 26 XXX |
|      |             | 350         |            | 206                              | 464            | 610            | 681            | 1377                | 34           | 2.28               | MICL 014 350 26 XXX |
|      |             | 370         |            | 219                              | 493            | 649            | 724            | 1464                | 35           | 2.41               | MICL 014 370 26 XXX |
|      |             | 390         |            | 231                              | 522            | 687            | 767            | 1550                | 37           | 2.54               | MICL 014 390 26 XXX |
| 410  | 244         | 551         | 725        | 809                              | 1636           | 39             | 2.67           | MICL 014 410 26 XXX |              |                    |                     |
| 430  | 257         | 580         | 763        | 852                              | 1722           | 41             | 2.80           | MICL 014 430 26 XXX |              |                    |                     |
| 450  | 270         | 609         | 802        | 894                              | 1808           | 43             | 2.93           | MICL 014 450 26 XXX |              |                    |                     |
| 470  | 283         | 638         | 840        | 937                              | 1895           | 44             | 3.06           | MICL 014 470 26 XXX |              |                    |                     |
| 490  | 296         | 667         | 878        | 979                              | 1980           | 46             | 3.19           | MICL 014 490 26 XXX |              |                    |                     |

\* measured in accordance with EN442

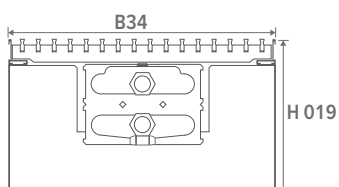
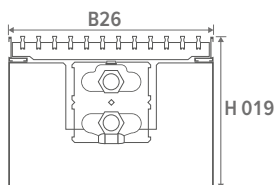
fill in grille code |



| HEIGHT<br>H | LENGTH<br>L | WIDTH<br>B | HEATING<br>Room temperature 20°C |                |                |                |                | WEIGHT<br>kg | WATER CONTENT<br>L  | ORDER CODE          |
|-------------|-------------|------------|----------------------------------|----------------|----------------|----------------|----------------|--------------|---------------------|---------------------|
|             |             |            | 35/30<br>Watts                   | 45/40<br>Watts | 50/45<br>Watts | 55/45<br>Watts | 75/65<br>Watts |              |                     |                     |
| MICL 014    | 070         | 34         | 35                               | 79             | 104            | 116            | 235            | 10           | 0.69                | MICL 014 070 34 XXX |
|             | 080         |            | 44                               | 99             | 130            | 145            | 294            | 11           | 0.78                | MICL 014 080 34 XXX |
|             | 090         |            | 53                               | 119            | 156            | 175            | 353            | 12           | 0.88                | MICL 014 090 34 XXX |
|             | 100         |            | 61                               | 138            | 182            | 203            | 411            | 13           | 0.98                | MICL 014 100 34 XXX |
|             | 110         |            | 70                               | 158            | 208            | 232            | 470            | 15           | 1.08                | MICL 014 110 34 XXX |
|             | 120         |            | 79                               | 178            | 235            | 262            | 529            | 16           | 1.18                | MICL 014 120 34 XXX |
|             | 130         |            | 88                               | 198            | 260            | 290            | 587            | 17           | 1.27                | MICL 014 130 34 XXX |
|             | 150         |            | 105                              | 237            | 313            | 349            | 705            | 19           | 1.47                | MICL 014 150 34 XXX |
|             | 170         |            | 123                              | 277            | 364            | 407            | 822            | 21           | 1.67                | MICL 014 170 34 XXX |
|             | 190         |            | 140                              | 316            | 417            | 465            | 940            | 24           | 1.86                | MICL 014 190 34 XXX |
|             | 210         |            | 158                              | 356            | 469            | 523            | 1057           | 26           | 2.06                | MICL 014 210 34 XXX |
|             | 230         |            | 175                              | 396            | 521            | 581            | 1175           | 28           | 2.25                | MICL 014 230 34 XXX |
|             | 250         |            | 193                              | 435            | 573            | 639            | 1292           | 30           | 2.45                | MICL 014 250 34 XXX |
|             | 270         |            | 210                              | 474            | 625            | 697            | 1409           | 33           | 2.65                | MICL 014 270 34 XXX |
|             | 290         |            | 228                              | 514            | 677            | 755            | 1527           | 35           | 2.84                | MICL 014 290 34 XXX |
|             | 310         |            | 245                              | 553            | 729            | 813            | 1644           | 37           | 3.04                | MICL 014 310 34 XXX |
|             | 330         |            | 263                              | 593            | 781            | 872            | 1762           | 39           | 3.23                | MICL 014 330 34 XXX |
|             | 350         |            | 281                              | 633            | 833            | 930            | 1880           | 42           | 3.43                | MICL 014 350 34 XXX |
|             | 370         |            | 298                              | 672            | 885            | 988            | 1997           | 44           | 3.63                | MICL 014 370 34 XXX |
| 390         |             | 316        | 712                              | 938            | 1046           | 2115           | 46             | 3.82         | MICL 014 390 34 XXX |                     |
| 410         |             | 333        | 751                              | 989            | 1104           | 2232           | 48             | 4.02         | MICL 014 410 34 XXX |                     |
| 430         |             | 351        | 791                              | 1041           | 1162           | 2349           | 50             | 4.21         | MICL 014 430 34 XXX |                     |
| 450         |             | 368        | 831                              | 1094           | 1220           | 2467           | 53             | 4.41         | MICL 014 450 34 XXX |                     |
| 470         |             | 386        | 870                              | 1146           | 1278           | 2584           | 55             | 4.61         | MICL 014 470 34 XXX |                     |
| 490         |             | 403        | 910                              | 1198           | 1336           | 2702           | 57             | 4.80         | MICL 014 490 34 XXX |                     |
| MICL 014    | 070         | 42         | 47                               | 107            | 141            | 157            | 317            | 12           | 0.92                | MICL 014 070 42 XXX |
|             | 080         |            | 59                               | 133            | 176            | 196            | 396            | 13           | 1.06                | MICL 014 080 42 XXX |
|             | 090         |            | 71                               | 160            | 211            | 235            | 475            | 15           | 1.19                | MICL 014 090 42 XXX |
|             | 100         |            | 83                               | 187            | 246            | 275            | 555            | 16           | 1.32                | MICL 014 100 42 XXX |
|             | 110         |            | 94                               | 213            | 281            | 313            | 633            | 17           | 1.45                | MICL 014 110 42 XXX |
|             | 120         |            | 106                              | 240            | 316            | 353            | 713            | 19           | 1.58                | MICL 014 120 42 XXX |
|             | 130         |            | 118                              | 267            | 351            | 392            | 792            | 20           | 1.72                | MICL 014 130 42 XXX |
|             | 150         |            | 142                              | 320            | 421            | 470            | 950            | 23           | 1.98                | MICL 014 150 42 XXX |
|             | 170         |            | 165                              | 373            | 491            | 548            | 1108           | 26           | 2.24                | MICL 014 170 42 XXX |
|             | 190         |            | 189                              | 427            | 562            | 627            | 1267           | 28           | 2.51                | MICL 014 190 42 XXX |
|             | 210         |            | 213                              | 480            | 632            | 705            | 1425           | 31           | 2.77                | MICL 014 210 42 XXX |
|             | 230         |            | 236                              | 533            | 702            | 783            | 1583           | 34           | 3.04                | MICL 014 230 42 XXX |
|             | 250         |            | 260                              | 586            | 772            | 862            | 1742           | 36           | 3.30                | MICL 014 250 42 XXX |
|             | 270         |            | 284                              | 640            | 842            | 940            | 1900           | 39           | 3.56                | MICL 014 270 42 XXX |
|             | 290         |            | 307                              | 693            | 912            | 1018           | 2058           | 42           | 3.83                | MICL 014 290 42 XXX |
|             | 310         |            | 331                              | 746            | 983            | 1097           | 2217           | 44           | 4.09                | MICL 014 310 42 XXX |
|             | 330         |            | 354                              | 800            | 1053           | 1175           | 2375           | 47           | 4.36                | MICL 014 330 42 XXX |
|             | 350         |            | 378                              | 853            | 1123           | 1253           | 2533           | 50           | 4.62                | MICL 014 350 42 XXX |
|             | 370         |            | 402                              | 906            | 1193           | 1332           | 2692           | 52           | 4.88                | MICL 014 370 42 XXX |
| 390         |             | 425        | 960                              | 1263           | 1410           | 2850           | 55             | 5.15         | MICL 014 390 42 XXX |                     |
| 410         |             | 449        | 1013                             | 1334           | 1488           | 3008           | 58             | 5.41         | MICL 014 410 42 XXX |                     |
| 430         |             | 473        | 1066                             | 1404           | 1566           | 3167           | 60             | 5.68         | MICL 014 430 42 XXX |                     |
| 450         |             | 496        | 1119                             | 1474           | 1645           | 3325           | 63             | 5.94         | MICL 014 450 42 XXX |                     |
| 470         |             | 520        | 1173                             | 1544           | 1723           | 3483           | 66             | 6.20         | MICL 014 470 42 XXX |                     |
| 490         |             | 544        | 1226                             | 1615           | 1801           | 3642           | 69             | 6.47         | MICL 014 490 42 XXX |                     |

\* measured in accordance with EN442

fill in grille code |



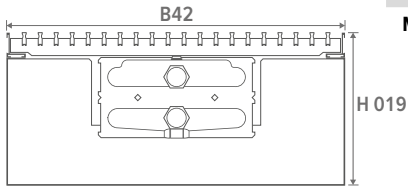
| MICL | HEIGHT<br>H<br>cm | LENGTH<br>L<br>cm | WIDTH<br>B<br>cm | HEATING<br>Room temperature 20°C |                |                |                |                     | WEIGHT<br>kg | WATER CONTENT<br>L | ORDER CODE          |
|------|-------------------|-------------------|------------------|----------------------------------|----------------|----------------|----------------|---------------------|--------------|--------------------|---------------------|
|      |                   |                   |                  | 35/30<br>Watts                   | 45/40<br>Watts | 50/45<br>Watts | 55/45<br>Watts | 75/65<br>Watts      |              |                    |                     |
| MICL | 019               | 070               | 26               | 29                               | 66             | 87             | 97             | 196                 | 9            | 0.46               | MICL 019 070 26 XXX |
|      |                   |                   | 080              | 37                               | 82             | 109            | 121            | 245                 | 10           | 0.52               | MICL 019 080 26 XXX |
|      |                   |                   | 090              | 44                               | 99             | 130            | 145            | 293                 | 11           | 0.59               | MICL 019 090 26 XXX |
|      |                   |                   | 100              | 51                               | 115            | 152            | 169            | 342                 | 12           | 0.65               | MICL 019 100 26 XXX |
|      |                   |                   | 110              | 59                               | 132            | 174            | 194            | 392                 | 13           | 0.72               | MICL 019 110 26 XXX |
|      |                   |                   | 120              | 66                               | 148            | 195            | 218            | 440                 | 14           | 0.78               | MICL 019 120 26 XXX |
|      |                   |                   | 130              | 73                               | 165            | 217            | 242            | 489                 | 15           | 0.85               | MICL 019 130 26 XXX |
|      |                   |                   | 150              | 88                               | 198            | 260            | 290            | 587                 | 17           | 0.98               | MICL 019 150 26 XXX |
|      |                   |                   | 170              | 102                              | 231            | 304            | 339            | 685                 | 19           | 1.11               | MICL 019 170 26 XXX |
|      |                   |                   | 190              | 117                              | 263            | 347            | 387            | 782                 | 21           | 1.24               | MICL 019 190 26 XXX |
|      |                   |                   | 210              | 131                              | 297            | 391            | 436            | 881                 | 23           | 1.37               | MICL 019 210 26 XXX |
|      |                   |                   | 230              | 146                              | 329            | 434            | 484            | 978                 | 25           | 1.50               | MICL 019 230 26 XXX |
|      |                   |                   | 250              | 161                              | 362            | 477            | 532            | 1076                | 27           | 1.63               | MICL 019 250 26 XXX |
|      |                   |                   | 270              | 175                              | 395            | 520            | 581            | 1174                | 29           | 1.76               | MICL 019 270 26 XXX |
|      |                   |                   | 290              | 190                              | 428            | 563            | 629            | 1271                | 31           | 1.89               | MICL 019 290 26 XXX |
|      |                   |                   | 310              | 204                              | 461            | 607            | 678            | 1370                | 33           | 2.02               | MICL 019 310 26 XXX |
|      |                   |                   | 330              | 219                              | 494            | 650            | 726            | 1467                | 35           | 2.15               | MICL 019 330 26 XXX |
|      |                   |                   | 350              | 234                              | 527            | 694            | 774            | 1565                | 37           | 2.28               | MICL 019 350 26 XXX |
|      |                   |                   | 370              | 248                              | 560            | 737            | 823            | 1663                | 39           | 2.41               | MICL 019 370 26 XXX |
|      |                   |                   | 390              | 263                              | 593            | 780            | 871            | 1760                | 41           | 2.54               | MICL 019 390 26 XXX |
| 410  | 277               | 626               | 824              | 920                              | 1859           | 43             | 2.67           | MICL 019 410 26 XXX |              |                    |                     |
| 430  | 292               | 659               | 867              | 967                              | 1956           | 45             | 2.80           | MICL 019 430 26 XXX |              |                    |                     |
| 450  | 307               | 692               | 911              | 1016                             | 2054           | 47             | 2.93           | MICL 019 450 26 XXX |              |                    |                     |
| 470  | 321               | 725               | 954              | 1064                             | 2152           | 49             | 3.06           | MICL 019 470 26 XXX |              |                    |                     |
| 490  | 336               | 758               | 997              | 1113                             | 2250           | 51             | 3.19           | MICL 019 490 26 XXX |              |                    |                     |
| MICL | 019               | 070               | 34               | 40                               | 89             | 117            | 131            | 265                 | 11           | 0.69               | MICL 019 070 34 XXX |
|      |                   |                   | 080              | 50                               | 112            | 147            | 164            | 332                 | 12           | 0.78               | MICL 019 080 34 XXX |
|      |                   |                   | 090              | 59                               | 134            | 176            | 196            | 397                 | 14           | 0.88               | MICL 019 090 34 XXX |
|      |                   |                   | 100              | 69                               | 156            | 205            | 229            | 463                 | 15           | 0.98               | MICL 019 100 34 XXX |
|      |                   |                   | 110              | 79                               | 178            | 235            | 262            | 530                 | 16           | 1.08               | MICL 019 110 34 XXX |
|      |                   |                   | 120              | 89                               | 201            | 264            | 295            | 596                 | 17           | 1.18               | MICL 019 120 34 XXX |
|      |                   |                   | 130              | 99                               | 223            | 293            | 327            | 662                 | 18           | 1.27               | MICL 019 130 34 XXX |
|      |                   |                   | 150              | 119                              | 268            | 352            | 393            | 795                 | 21           | 1.47               | MICL 019 150 34 XXX |
|      |                   |                   | 170              | 138                              | 312            | 411            | 459            | 927                 | 23           | 1.67               | MICL 019 170 34 XXX |
|      |                   |                   | 190              | 158                              | 357            | 469            | 524            | 1059                | 26           | 1.86               | MICL 019 190 34 XXX |
|      |                   |                   | 210              | 178                              | 401            | 528            | 590            | 1192                | 28           | 2.06               | MICL 019 210 34 XXX |
|      |                   |                   | 230              | 198                              | 446            | 587            | 655            | 1324                | 31           | 2.25               | MICL 019 230 34 XXX |
|      |                   |                   | 250              | 217                              | 491            | 646            | 721            | 1457                | 33           | 2.45               | MICL 019 250 34 XXX |
|      |                   |                   | 270              | 237                              | 535            | 705            | 786            | 1590                | 36           | 2.65               | MICL 019 270 34 XXX |
|      |                   |                   | 290              | 257                              | 579            | 763            | 851            | 1721                | 38           | 2.84               | MICL 019 290 34 XXX |
|      |                   |                   | 310              | 277                              | 624            | 822            | 917            | 1854                | 41           | 3.04               | MICL 019 310 34 XXX |
|      |                   |                   | 330              | 297                              | 669            | 881            | 983            | 1987                | 43           | 3.23               | MICL 019 330 34 XXX |
|      |                   |                   | 350              | 316                              | 713            | 939            | 1048           | 2119                | 45           | 3.43               | MICL 019 350 34 XXX |
|      |                   |                   | 370              | 336                              | 758            | 998            | 1114           | 2252                | 48           | 3.63               | MICL 019 370 34 XXX |
|      |                   |                   | 390              | 356                              | 803            | 1057           | 1179           | 2384                | 50           | 3.82               | MICL 019 390 34 XXX |
| 410  | 376               | 847               | 1115             | 1244                             | 2516           | 53             | 4.02           | MICL 019 410 34 XXX |              |                    |                     |
| 430  | 395               | 892               | 1174             | 1310                             | 2649           | 55             | 4.21           | MICL 019 430 34 XXX |              |                    |                     |
| 450  | 415               | 936               | 1233             | 1376                             | 2781           | 58             | 4.41           | MICL 019 450 34 XXX |              |                    |                     |
| 470  | 435               | 981               | 1292             | 1441                             | 2914           | 60             | 4.61           | MICL 019 470 34 XXX |              |                    |                     |
| 490  | 455               | 1026              | 1350             | 1507                             | 3046           | 63             | 4.80           | MICL 019 490 34 XXX |              |                    |                     |

\* measured in accordance with EN442

fill in grille code |

# MINI CANAL

# HEIGHT 019



| MICL | HEIGHT<br>H<br>cm | LENGTH<br>L<br>cm | WIDTH<br>B<br>cm | HEATING<br>Room temperature 20°C |                |                |                |                | WEIGHT<br>kg | WATER CONTENT<br>L | ORDER CODE          |
|------|-------------------|-------------------|------------------|----------------------------------|----------------|----------------|----------------|----------------|--------------|--------------------|---------------------|
|      |                   |                   |                  | 35/30<br>Watts                   | 45/40<br>Watts | 50/45<br>Watts | 55/45<br>Watts | 75/65<br>Watts |              |                    |                     |
|      | 019               | 070               | 42               | 54                               | 122            | 161            | 180            | 363            | 13           | 0.92               | MICL 019 070 42 XXX |
|      |                   | 080               |                  | 68                               | 153            | 202            | 225            | 455            | 15           | 1.06               | MICL 019 080 42 XXX |
|      |                   | 090               |                  | 81                               | 184            | 242            | 270            | 546            | 16           | 1.19               | MICL 019 090 42 XXX |
|      |                   | 100               |                  | 95                               | 214            | 282            | 315            | 636            | 18           | 1.32               | MICL 019 100 42 XXX |
|      |                   | 110               |                  | 109                              | 245            | 323            | 360            | 728            | 19           | 1.45               | MICL 019 110 42 XXX |
|      |                   | 120               |                  | 122                              | 275            | 363            | 405            | 818            | 20           | 1.58               | MICL 019 120 42 XXX |
|      |                   | 130               |                  | 136                              | 306            | 403            | 450            | 909            | 22           | 1.72               | MICL 019 130 42 XXX |
|      |                   | 150               |                  | 163                              | 367            | 484            | 540            | 1091           | 25           | 1.98               | MICL 019 150 42 XXX |
|      |                   | 170               |                  | 190                              | 429            | 564            | 630            | 1273           | 28           | 2.24               | MICL 019 170 42 XXX |
|      |                   | 190               |                  | 217                              | 490            | 645            | 720            | 1455           | 31           | 2.51               | MICL 019 190 42 XXX |
|      |                   | 210               |                  | 244                              | 551            | 726            | 810            | 1637           | 34           | 2.77               | MICL 019 210 42 XXX |
|      |                   | 230               |                  | 272                              | 612            | 806            | 900            | 1819           | 37           | 3.04               | MICL 019 230 42 XXX |
|      |                   | 250               |                  | 299                              | 674            | 887            | 990            | 2001           | 40           | 3.30               | MICL 019 250 42 XXX |
|      |                   | 270               |                  | 326                              | 735            | 967            | 1079           | 2182           | 42           | 3.56               | MICL 019 270 42 XXX |
|      |                   | 290               |                  | 353                              | 796            | 1048           | 1170           | 2365           | 45           | 3.83               | MICL 019 290 42 XXX |
|      |                   | 310               |                  | 380                              | 858            | 1129           | 1260           | 2547           | 48           | 4.09               | MICL 019 310 42 XXX |
|      |                   | 330               |                  | 407                              | 918            | 1209           | 1349           | 2728           | 51           | 4.36               | MICL 019 330 42 XXX |
|      |                   | 350               |                  | 434                              | 980            | 1290           | 1439           | 2910           | 54           | 4.62               | MICL 019 350 42 XXX |
|      |                   | 370               |                  | 462                              | 1041           | 1371           | 1529           | 3092           | 57           | 4.88               | MICL 019 370 42 XXX |
|      |                   | 390               |                  | 489                              | 1102           | 1451           | 1619           | 3274           | 60           | 5.15               | MICL 019 390 42 XXX |
|      |                   | 410               |                  | 516                              | 1164           | 1532           | 1709           | 3456           | 63           | 5.41               | MICL 019 410 42 XXX |
|      |                   | 430               |                  | 543                              | 1225           | 1613           | 1799           | 3638           | 66           | 5.68               | MICL 019 430 42 XXX |
|      |                   | 450               |                  | 570                              | 1286           | 1693           | 1889           | 3820           | 69           | 5.94               | MICL 019 450 42 XXX |
|      |                   | 470               |                  | 597                              | 1347           | 1774           | 1979           | 4001           | 72           | 6.20               | MICL 019 470 42 XXX |
|      |                   | 490               |                  | 625                              | 1409           | 1855           | 2070           | 4184           | 74           | 6.47               | MICL 019 490 42 XXX |

\*measured in accordance with EN442

fill in grille code |

## JRT-300



8751 050014

### POWER SUPPLY

supply voltage

2 x AAA 1.5 V

### OUTPUT / INPUT VOLTAGE

valve 24V DC contact

-

potential-free contact

1 (NO/NC)

input from keycard

-

input from window contact

-

fan (0 - 10 V DC)

-

manual 3-position speed controller

-

automatic mode

-

### APPLICATIONS

2-pipe



manual (H/C)

-

auto (H/C) - water temperature sensor required

-

4-pipe



manual (H/C)

-

auto (H/C)

-

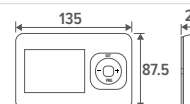
### DIMENSIONS

for wall mounting

✓

for recessed-mounting

optional



### POSITION

LCD display with backlight

✓

LCD touch screen with backlight

-

protection category IP20

✓

protection category IP30

-

Integrated CO2-sensor

-

humidity sensor

-

### FEATURES

programmable time zones

✓

control via Wi-Fi (smartphone app)

-

fan start delay

-

continuous fan speed

-

temperature sensor 80 cm

optional



# MINI CANAL

# PARTS

## COMPLETE UNIT WITHOUT GRILLE



### STANDARD DELIVERY

Completely assembled dark-grey floor drain with:

- Low-H<sub>2</sub>O heat exchanger, with dirt and dust repellent coating in graphite grey (RAL 7024)
- air vent(s) 1/8" and drain plug(s) 1/2"
- anchorage
- choice of aluminium frame (L-profile) or cover frame (Z-profile):
  - FNA: natural colour
  - FNC: lacquered
  - FBL: black
  - FDB: dark brown
  - FBR: brass-coloured

### ORDER CODE

MICA 009 110 14 XXX

Colour frame  
Width  
Length  
Height

## FLOOR UNIT INCLUDING BRACKETS



### STANDARD DELIVERY

Completely assembled dark-grey floor drain with:

- brackets
- anchorage

### ORDER CODE DUCT

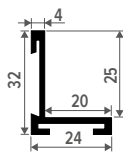
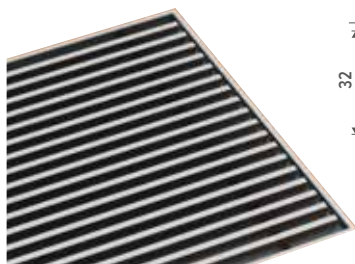
7601 009 110 14

Width  
Length  
Height



always add L-profile or Z-profile (cover) frame to the order, pre-assembled

## FRAME



### STANDARD DELIVERY

frame in anodised aluminium  
lengths up to 6 metres in one piece  
choice of aluminium frame:

- FNA: natural colour
- FNC: lacquered
- FBL: black
- FDB: dark brown
- FBR: brass-coloured

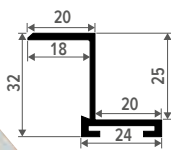
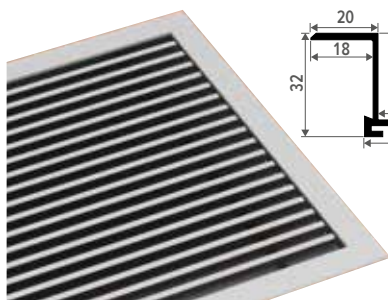
To ensure perfect adherence of the lacquer coating, an extremely wear-resistant and UV-resistant polyester lacquer coating of the highest quality is used.

### ORDER CODE FRAME

FRML 070 14 XXX

Colour frame  
FNA: natural colour  
FNC: lacquered  
FBL: black  
FDB: dark brown  
FBR: brass-coloured  
Width  
Length

## Z PROFILE (COVER FRAME)



### STANDARD DELIVERY

cover frame (Z-profile) in anodised aluminium  
Lengte tot max. 6 meter uit één stuk.  
choice of aluminium cover frame (Z-profile):

- FNA: natural colour
- FNC: lacquered
- FBL: black
- FDB: dark brown
- FBR: brass-coloured

To ensure perfect adherence of the lacquer coating, an extremely wear-resistant and UV-resistant polyester lacquer coating of the highest quality is used.

### ORDER CODE Z PROFILE (COVER FRAME)

FRMZ 070 14 XXX

Colour Z profile (cover frame)  
FNA: natural colour  
FNC: lacquered  
FBL: black  
FDB: dark brown  
FBR: brass-coloured  
Width  
Length

## GRILLES



### STANDARD DELIVERY

#### CHOICE OF

- Rigid aluminium grilles
- Designo rigid aluminium grilles
- Roll-up aluminium grilles
- Roll-up stainless steel grille
- Roll-up wooden grilles
- Designo roll-up wooden grilles

lengths up to 6 metres in one piece  
length grille = length frame - 1.2 cm

### ORDER CODE

GRIL 108.8 12.8 XXX

Grille  
Width  
Length

Dimensional tolerance width grille: +/- 2 mm

## OVERVIEW GRILLES

### CATEGORY 1



**SNA**  
Rigid alu. natural



**SBR**  
Rigid alu. Brass-coloured

### CATEGORY 2



**DNA**  
Designo Rigid alu. natural



**DBR**  
Designo rigid alu. Brass-coloured



**DDB**  
Designo rigid alu. Dark brown

### CATEGORY 3



**DMV**  
Designo roll-up wooden Merbau varnished



**DON**  
Designo roll-up wooden oak natural



**SDB**  
Rigid alu. Dark brown



**SBL**  
Rigid alu. Black



**DBL**  
Designo rigid alu. Black



**RMN**  
roll-up wooden Merbau natural



**RMV**  
roll-up wooden Merbau varnished



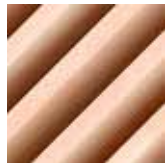
**DOV**  
Designo roll-up wooden oak varnished



**RBL**  
roll-up aluminium. Black



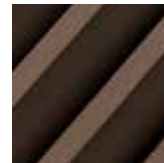
**RBN**  
Roll-up wooden beech natural



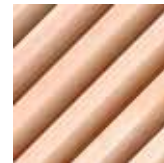
**RBV**  
Roll-up wooden beech varnished



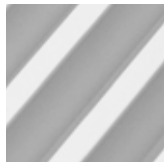
**RBR**  
Roll-up aluminium. Brass-coloured



**RDB**  
roll-up aluminium. Dark brown



**DBV**  
Designo roll-up wooden beech varnished



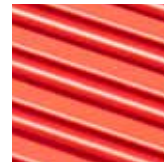
**RNA**  
roll-up aluminium. natural



**RON**  
roll-up wooden oak natural



**ROV**  
roll-up wooden oak varnished



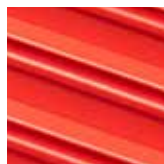
**DNC XXX**  
Designo rigid coated alu



**DBN**  
Designo roll-up wooden beech natural



**DMN**  
Designo roll-up wooden Merbau natural



**SNC XXX**  
rigid coated alu

## HEAT EXCHANGER



### STANDARD DELIVERY

- heat exchanger including air vent and drain cock
- **length of standard heat exchanger = L duct - 10 cm**



Only the length of the heat exchanger can be changed with regard to the standard supplied heat exchanger. The type of heat exchanger (04, 09, 14, etc.) cannot be changed. When ordering a shorter heat exchanger, always add 2 extra brackets to the order.

### ORDER CODE SAME-END CONNECTION

5003 000 060 05 BS10

└── Type heat exchanger

└── Length heat exchanger

### ORDER CODE OPPOSITE END CONNECTIONS

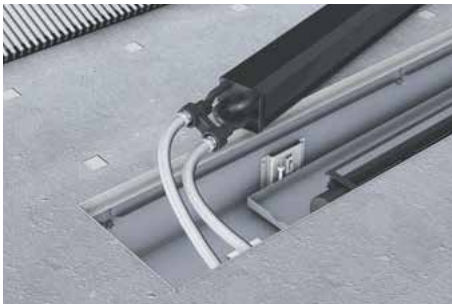
5004 000 060 04 BS10

└── Length heat exchanger

## OVERVIEW TYPES OF HEAT EXCHANGERS

|            | WIDTH 14   | WIDTH 18   | WIDTH 26   | WIDTH 34   | WIDTH 42   |
|------------|--|--|--|--|--|
| HEIGHT 009 | <br>Type 04 other end | <br>Type 09 | <br>Type 09   | <br>Type 14   | <br>Type 19   |
| HEIGHT 011 | <br>Type 04 other end | <br>Type 09 | <br>Type 09   | <br>Type 14   | <br>Type 19   |
| HEIGHT 014 | <br>Type 05           |  | <br>Type 10   | <br>Type 15   | <br>Type 20   |
| HEIGHT 019 |  |  | <br>Type 10 | <br>Type 15 | <br>Type 20 |

## STAINLESS STEEL FLEXIBLE CONNECTIONS 1/2"



### STANDARD DELIVERY

- 2 stainless steel flexible connections 1/2"

Flexible connections may also be used to connect the heat exchangers. In this way, it will be easy to lift the heat exchanger, e. g. for annual cleaning. Just choose a heat exchanger which is one size shorter and order 2 extra brackets.

### ORDER CODE FLEXIBELS

7990.068



The indicated outputs at  $\Delta T$  50 are exact values, measured in accordance with EN442. This table provides a calculated value using an average correction factor for all other  $\Delta T$  outputs, valid for all dimensions.

Click [www.jaga.com/selection-tools/](http://www.jaga.com/selection-tools/) to download the calculation tools with the exact outputs. The online calculation tools are kept up to date with the most recent data. Minor output differences between printed tables and the different online calculation tools are therefore completely normal and within the margins of tolerance imposed by the standard.

## AVERAGE CORRECTION FACTORS FOR STATIC PRODUCTS ACCORDING TO EN442 - 75/65/20°C

room temperature: 20°C

Average N-value: 1.36

| TA | TR | 65   | 60   | 55   | 50   | 45   | 40   | 35   | 30   | 25   |
|----|----|------|------|------|------|------|------|------|------|------|
| 75 |    | 1.00 | 0.93 | 0.85 | 0.77 | 0.69 | 0.61 | 0.52 | 0.42 | 0.31 |
| 70 |    | 0.94 | 0.87 | 0.79 | 0.72 | 0.64 | 0.56 | 0.48 | 0.39 | 0.28 |
| 65 |    |      | 0.80 | 0.74 | 0.67 | 0.60 | 0.52 | 0.44 | 0.35 | 0.25 |
| 60 |    |      |      | 0.68 | 0.61 | 0.55 | 0.48 | 0.40 | 0.32 | 0.23 |
| 55 |    |      |      |      | 0.56 | 0.50 | 0.43 | 0.36 | 0.29 | 0.20 |
| 50 |    |      |      |      |      | 0.44 | 0.38 | 0.32 | 0.25 | 0.18 |
| 45 |    |      |      |      |      |      | 0.34 | 0.28 | 0.22 | 0.15 |
| 40 |    |      |      |      |      |      |      | 0.24 | 0.19 | 0.13 |
| 35 |    |      |      |      |      |      |      |      | 0.15 | 0.10 |
| 30 |    |      |      |      |      |      |      |      |      | 0.07 |

room temperature: 24°C

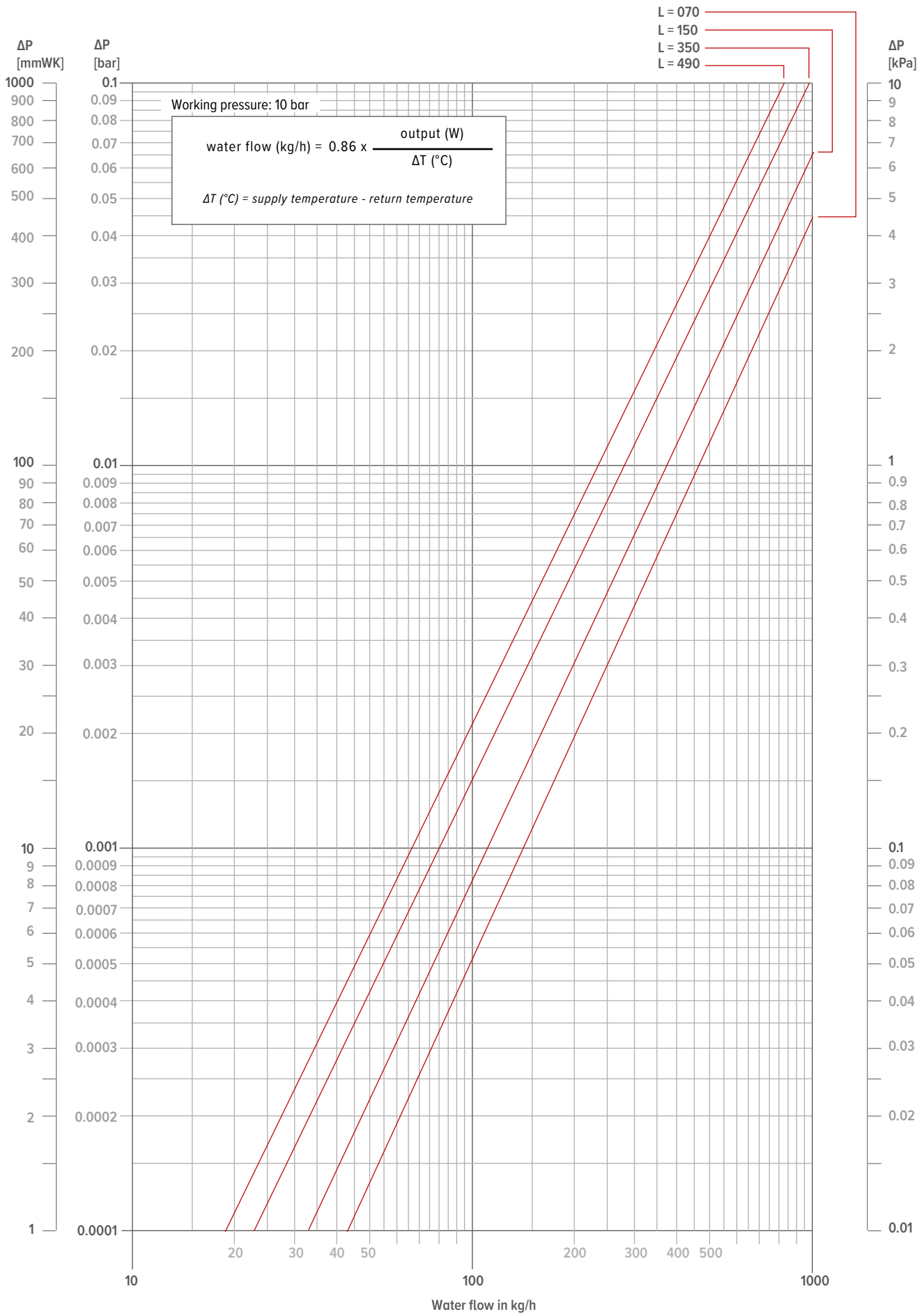
Average N-value: 1.36

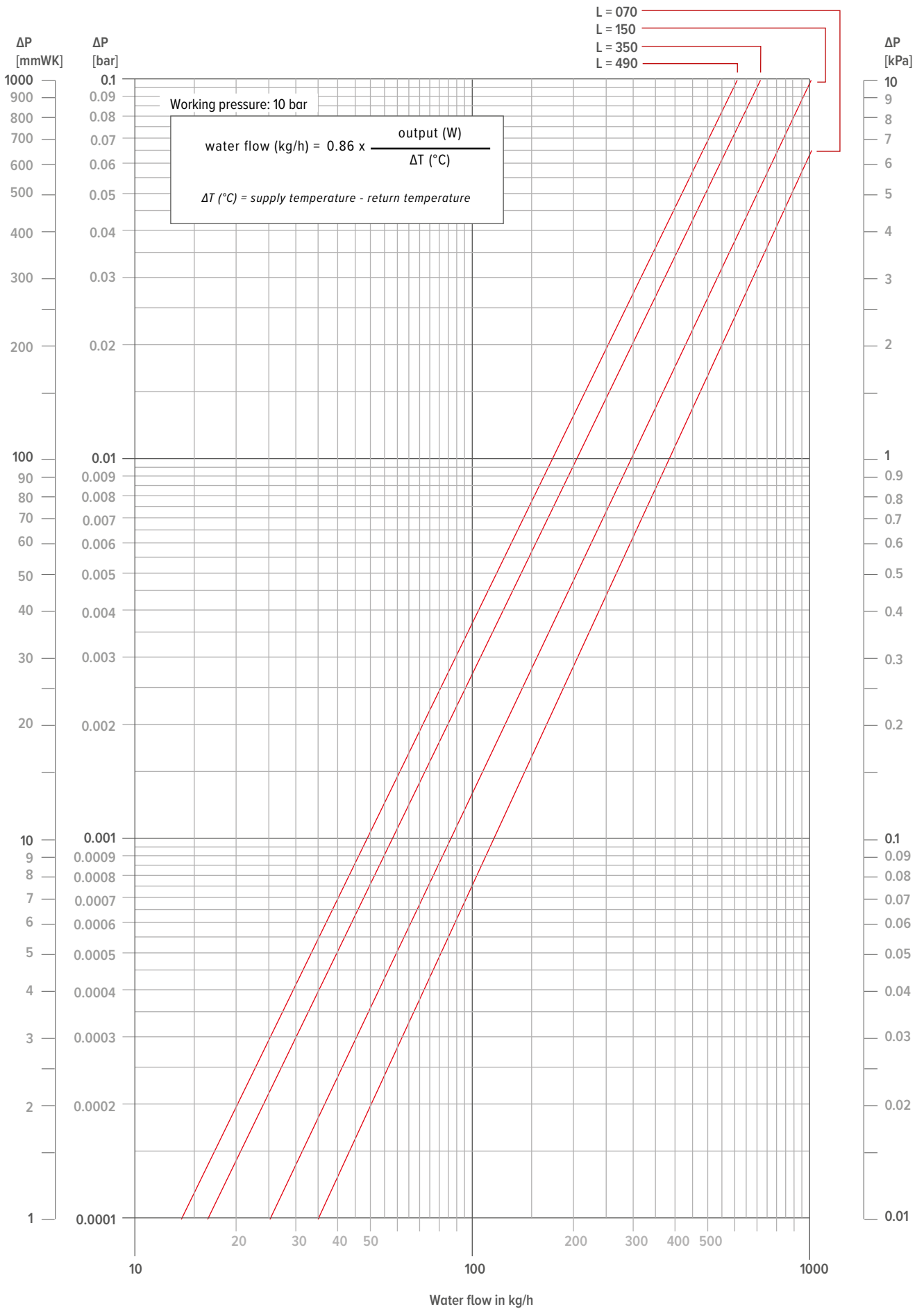
| TA | TR | 65   | 60   | 55   | 50   | 45   | 40   | 35   | 30   | 25   |
|----|----|------|------|------|------|------|------|------|------|------|
| 75 |    | 0.89 | 0.82 | 0.75 | 0.67 | 0.59 | 0.51 | 0.41 | 0.31 | 0.16 |
| 70 |    | 0.83 | 0.76 | 0.69 | 0.62 | 0.54 | 0.47 | 0.38 | 0.28 | 0.14 |
| 65 |    |      | 0.70 | 0.64 | 0.57 | 0.50 | 0.43 | 0.35 | 0.25 | 0.12 |
| 60 |    |      |      | 0.58 | 0.52 | 0.45 | 0.38 | 0.31 | 0.23 | 0.11 |
| 55 |    |      |      |      | 0.47 | 0.41 | 0.34 | 0.28 | 0.20 | 0.09 |
| 50 |    |      |      |      |      | 0.36 | 0.30 | 0.24 | 0.17 | 0.08 |
| 45 |    |      |      |      |      |      | 0.26 | 0.20 | 0.14 | 0.06 |
| 40 |    |      |      |      |      |      |      | 0.17 | 0.12 | 0.05 |
| 35 |    |      |      |      |      |      |      |      | 0.09 | 0.03 |
| 30 |    |      |      |      |      |      |      |      |      | 0.02 |

# MINI CANAL

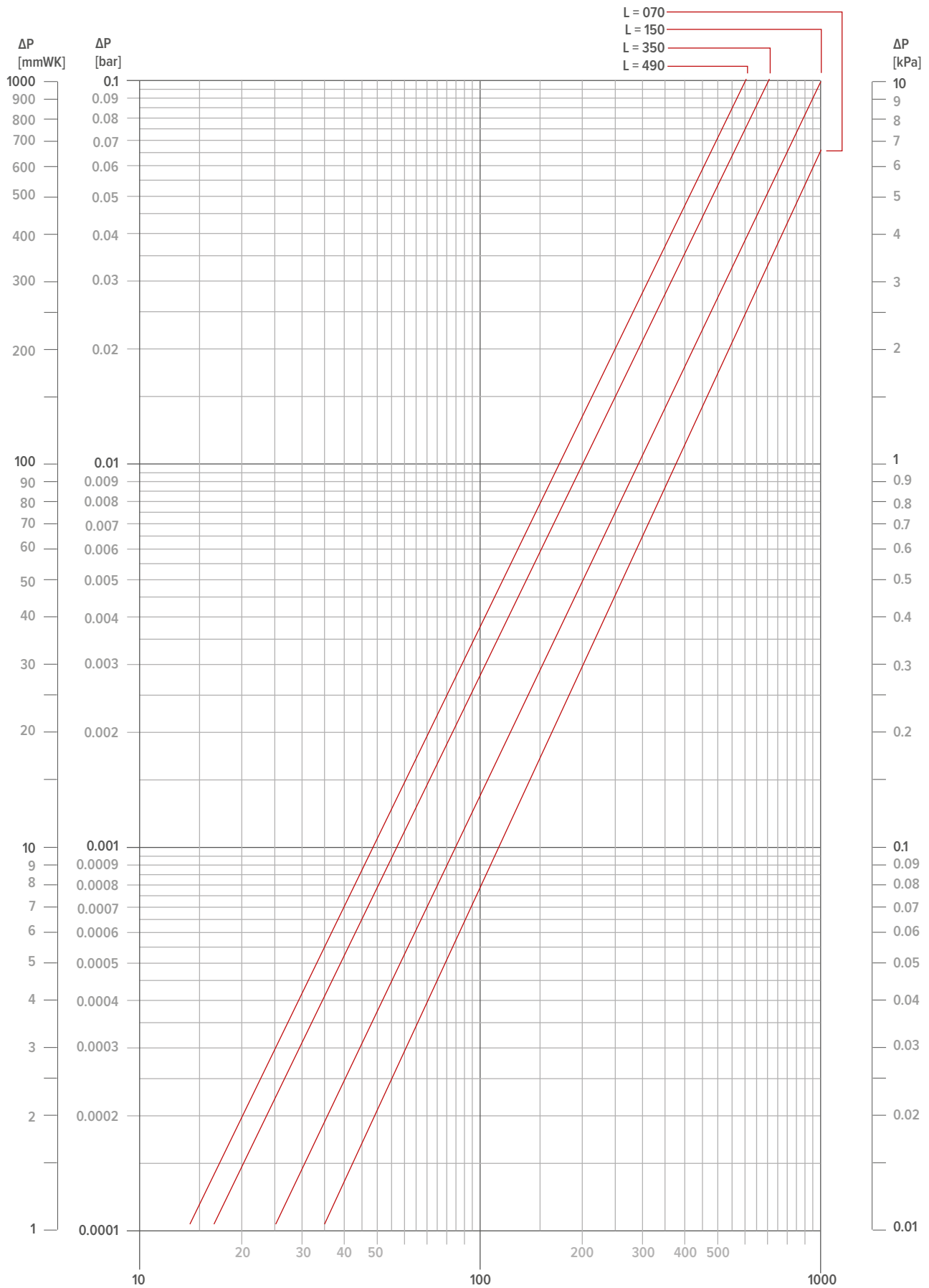
# GUIDELINE FOR LIMITING FLOW NOISE

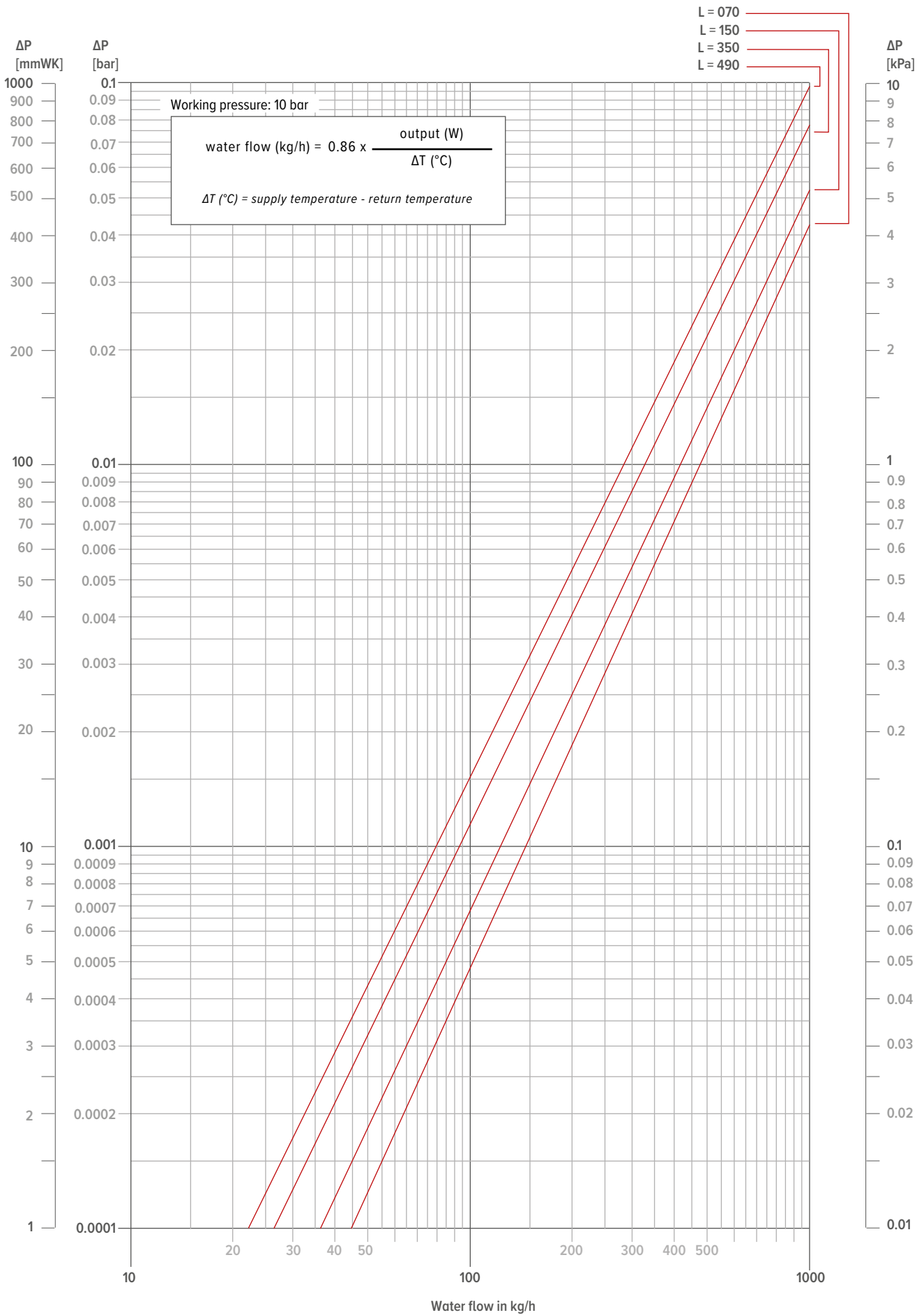
| TUBE                            | outer Ø<br>mm | Wall<br>thick-<br>ness<br>mm | Max. water<br>speed<br>(EN10255)<br>m/s | water content<br>per metre<br>l | max. water<br>flow<br>kg/h | Maximum power at ΔT (° C) (T supply - T return) |        |       |       |       |       |       |
|---------------------------------|---------------|------------------------------|---|---------------------------------|----------------------------|---|--------|-------|-------|-------|-------|-------|
|                                 |               |                              |   |                                 |                            | ΔT 30   | ΔT 20  | ΔT 10 | ΔT 5  | ΔT 4  | ΔT 3  | ΔT 2  |
|                                 |               |                              |   |                                 |                            | Watts   | Watts  | Watts | Watts | Watts | Watts | Watts |
| <b>GALVANISED PIPE DIN 2440</b> |               |                              |   |                                 |                            |   |        |       |       |       |       |       |
| 3/8 DN10 OD                     | 17.2          | 2.35                         | 0.40                                    | 0.12                            | 173                        | 6028  | 4019   | 2009  | 1005  | 804   | 603   | 402   |
| 1/2 DN15 OD                     | 21.3          | 2.65                         | 0.40                                    | 0.20                            | 288                        | 10046   | 6698   | 3349  | 1674  | 1340  | 1005  | 670   |
| 3/4 DN20 OD                     | 26.9          | 2.65                         | 0.42                                    | 0.37                            | 559                        | 19515   | 13010  | 6505  | 3253  | 2602  | 1952  | 1301  |
| 1 DN25 OD                       | 33.7          | 3.25                         | 0.49                                    | 0.58                            | 1023                       | 35690   | 23793  | 11897 | 5948  | 4759  | 3569  | 2379  |
| 1 1/4 DN32 OD                   | 42.4          | 3.25                         | 0.60                                    | 1.01                            | 2182                       | 76101   | 50734  | 25367 | 12684 | 10147 | 7610  | 5073  |
| 1 1/2 DN40 OD                   | 48.3          | 3.25                         | 0.66                                    | 1.37                            | 3255                       | 113549  | 75700  | 37850 | 18925 | 15140 | 11355 | 7570  |
| 2 DN50 OD                       | 60.3          | 3.65                         | 0.80                                    | 2.21                            | 6365                       | 222025  | 148017 | 74008 | 37004 | 29603 | 22203 | 14802 |
| <b>PRECISION METAL TUBE</b>     |               |                              |   |                                 |                            |   |        |       |       |       |       |       |
| 10/1                            | 10            | 1.00                         | 0.40                                    | 0.05                            | 72                         | 2512  | 1674   | 837   | 419   | 335   | 251   | 167   |
| 12/1                            | 12            | 1.00                         | 0.40                                    | 0.08                            | 115                        | 4019  | 2679   | 1340  | 670   | 536   | 402   | 268   |
| 14/1                            | 14            | 1.00                         | 0.40                                    | 0.11                            | 158                        | 5526  | 3684   | 1842  | 921   | 737   | 553   | 368   |
| 15/1                            | 15            | 1.00                         | 0.40                                    | 0.13                            | 187                        | 6530  | 4353   | 2177  | 1088  | 871   | 653   | 435   |
| 16/1                            | 16            | 1.00                         | 0.40                                    | 0.15                            | 216                        | 7535  | 5023   | 2512  | 1256  | 1005  | 753   | 502   |
| 18/1                            | 18            | 1.00                         | 0.40                                    | 0.20                            | 288                        | 10046   | 6698   | 3349  | 1674  | 1340  | 1005  | 670   |
| 22/1                            | 22            | 1.00                         | 0.40                                    | 0.31                            | 446                        | 15572   | 10381  | 5191  | 2595  | 2076  | 1557  | 1038  |
| 28/1                            | 28            | 1.00                         | 0.47                                    | 0.53                            | 904                        | 31522   | 21014  | 10507 | 5254  | 4203  | 3152  | 2101  |
| <b>RPE/ALU</b>                  |               |                              |   |                                 |                            |   |        |       |       |       |       |       |
| 12/2                            | 12            | 2.00                         | 0.40                                    | 0.05                            | 72                         | 2512  | 1674   | 837   | 419   | 335   | 251   | 167   |
| 14/2                            | 14            | 2.00                         | 0.40                                    | 0.08                            | 115                        | 4019  | 2679   | 1340  | 670   | 536   | 402   | 268   |
| 16/1.5                          | 16            | 1.50                         | 0.40                                    | 0.13                            | 187                        | 6530  | 4353   | 2177  | 1088  | 871   | 653   | 435   |
| 16/2                            | 16            | 2.00                         | 0.40                                    | 0.11                            | 158                        | 5526  | 3684   | 1842  | 921   | 737   | 553   | 368   |
| 17/2                            | 17            | 2.00                         | 0.40                                    | 0.13                            | 187                        | 6530  | 4353   | 2177  | 1088  | 871   | 653   | 435   |
| 18/2                            | 18            | 2.00                         | 0.40                                    | 0.15                            | 216                        | 7535  | 5023   | 2512  | 1256  | 1005  | 753   | 502   |
| 20/2                            | 20            | 2.00                         | 0.40                                    | 0.20                            | 288                        | 10046   | 6698   | 3349  | 1674  | 1340  | 1005  | 670   |
| 26/3                            | 26            | 3.00                         | 0.40                                    | 0.31                            | 446                        | 15572   | 10381  | 5191  | 2595  | 2076  | 1557  | 1038  |
| 32/3                            | 32            | 3.00                         | 0.47                                    | 0.53                            | 904                        | 31522   | 21014  | 10507 | 5254  | 4203  | 3152  | 2101  |
| 40/3.5                          | 40            | 3.50                         | 0.56                                    | 0.86                            | 1726                       | 60220   | 40147  | 20073 | 10037 | 8029  | 6022  | 4015  |
| 50/4.25                         | 50            | 4.25                         | 0.66                                    | 1.35                            | 3206                       | 111824  | 74549  | 37275 | 18637 | 14910 | 11182 | 7455  |
| 63/5                            | 63            | 5.00                         | 0.80                                    | 2.21                            | 6346                       | 221359  | 147573 | 73786 | 36893 | 29515 | 22136 | 14757 |



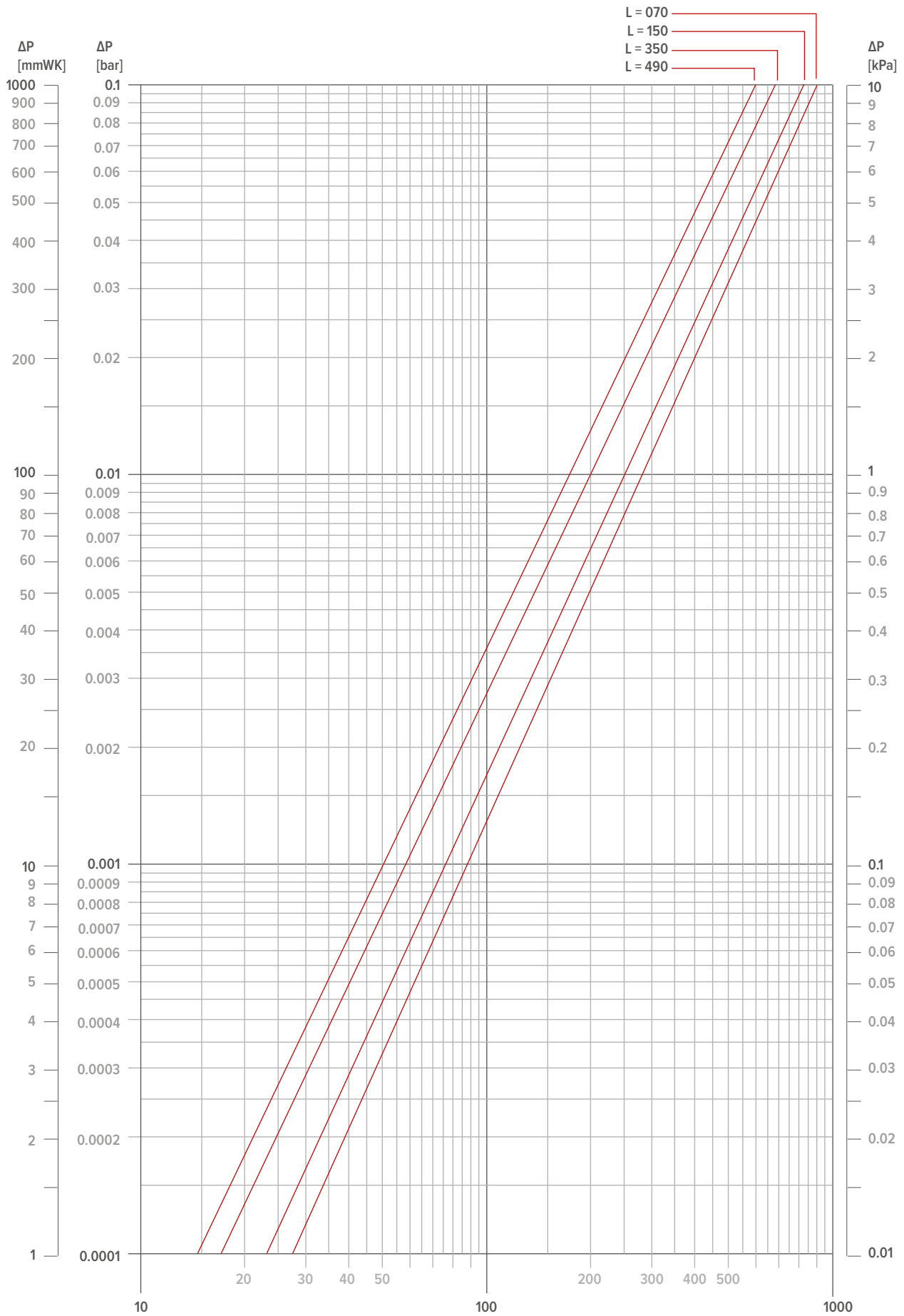


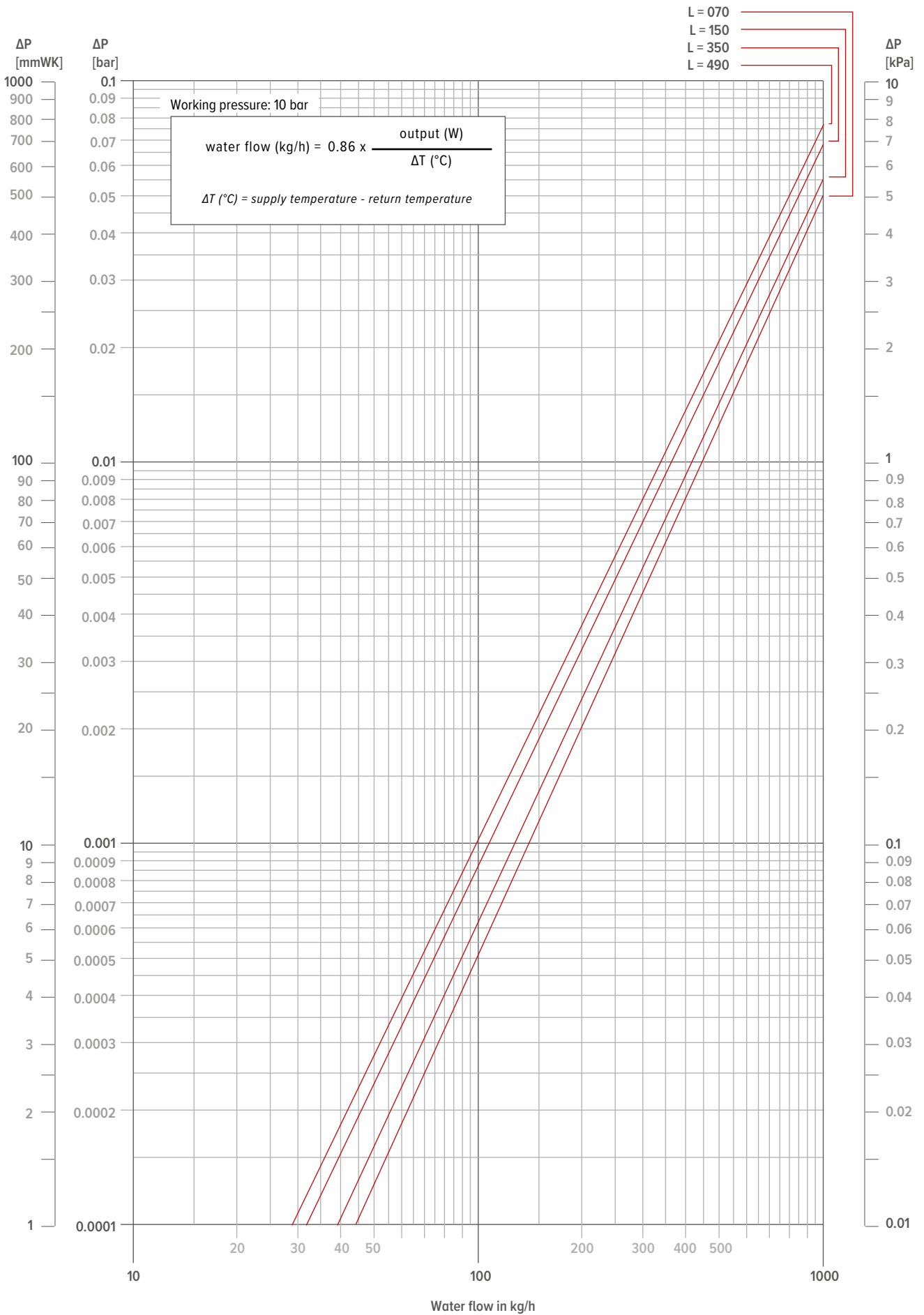
# MINI CANAL

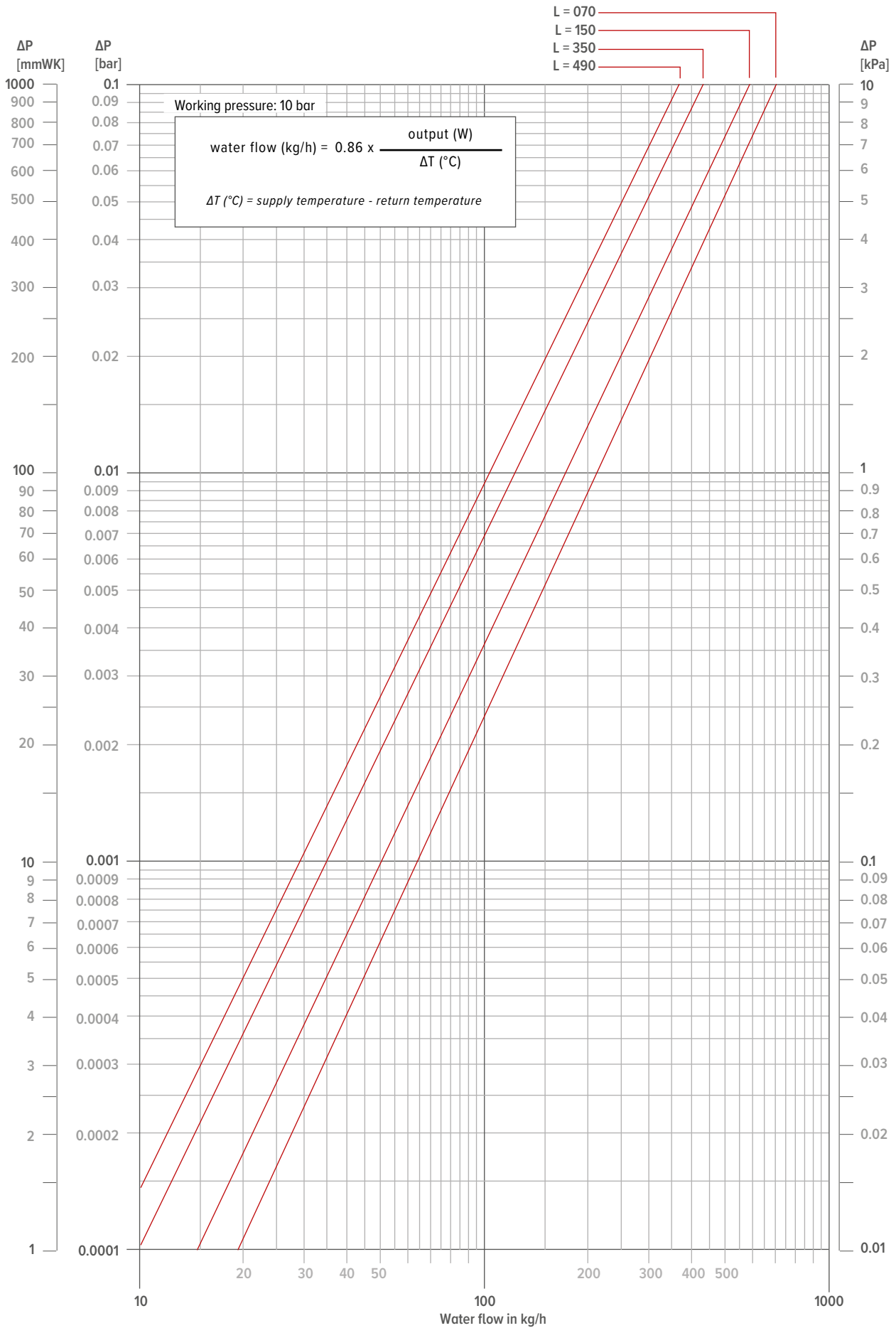


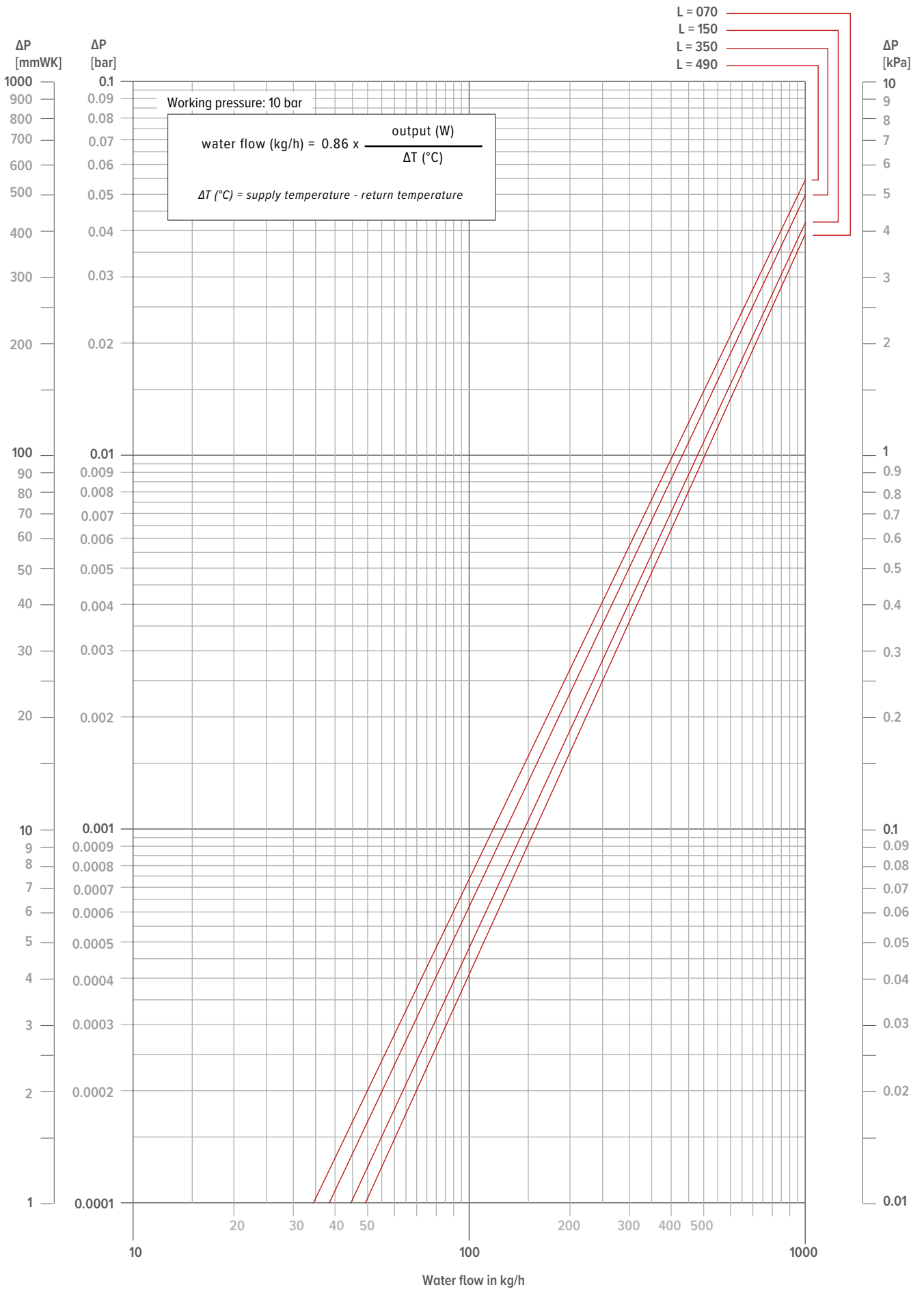


# MINI CANAL









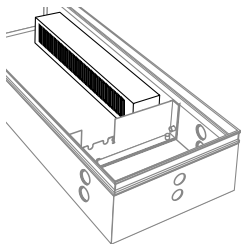




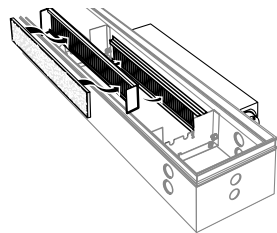
# OVERVIEW SPECIALS

## OTHER SYSTEMS VENTILATION

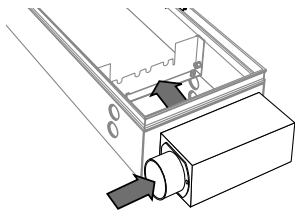
### INTERNAL AIR SUPPLY COLLECTOR



### EXTERIOR AIR SUPPLY COLLECTOR



### AIR SUPPLY COLLECTOR AT HEADPIECE



## SPECIAL VERSIONS

- custom made corners (with rigid and roll-up grilles)
- non standard lengths, widths and or heights
- other colours
- non standard fixings and heigth control systems
- heat exchangers with two sided connection for continuous construction



**Mini Canal**  
custom made corners (Rigid aluminium grilles)  
Aller Media Building - Copenhagen Denmark



**Mini Canal**  
custom made corners  
De Rotterdam - The Netherlands

**Mini Canal**  
**Customised length**  
**CODE 7696.03**

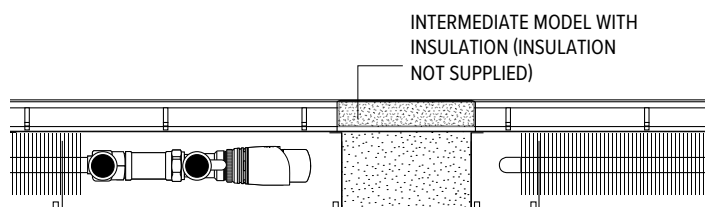
**L = 215 cm**



# OVERVIEW SPECIALS

## SPECIAL ACCESSORIES

- insulated baffle plates
- temporary intermediate module
- intermediate module for sockets
- continuous grille (frame connection)



**Mini Canal**  
intermediate model with insulation (insulation not supplied)  
Espace Seine - France



**Mini Canal**  
insulated baffle plates  
Santander Bank - Mönchengladbach



**Mini Canal**  
insulated baffle plates  
Santander Bank - Mönchengladbach



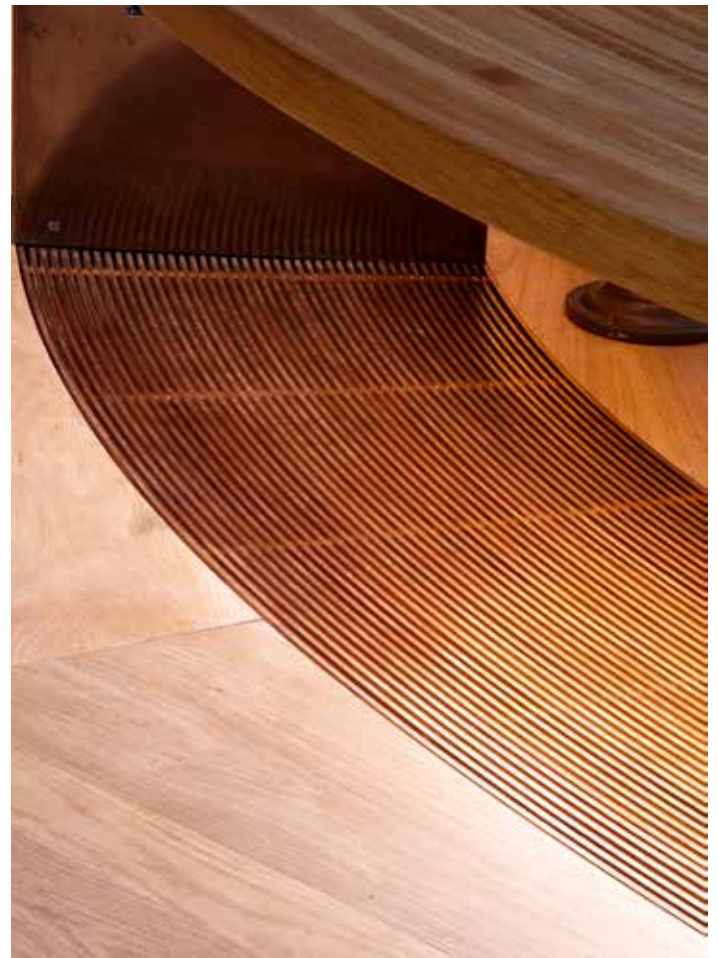
Mini Canal  
circular grille  
University college -  
London UK

## GRILLES & FRAMES

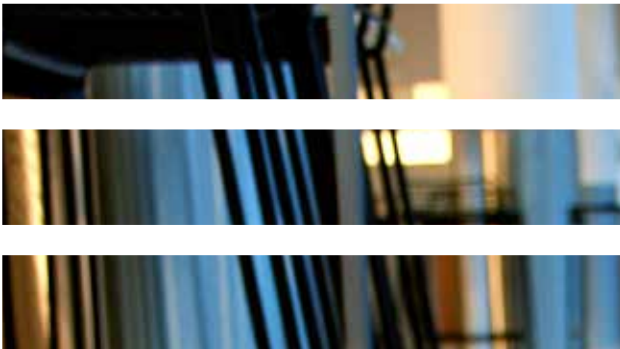
- reinforced grilles
- frame with flange
- other dimensions
- grille with round cutout
- grilles with circular cut-outs (e.g., around structural columns)
- adaptations for frames



Mini Canal  
grille with circular cut-out  
Santander Bank - Mönchengladbach



Mini Canal  
circular grille  
University college -  
London UK



**jaga** CLIMATE  
DESIGNERS

**JAGA ESPAÑA CONVES TERMIC S.L.**

¿Necesitas asesoramiento? ¡Consulta con nuestro departamento técnico!

+34 966 83 03 03  
+34 673 51 45 87

proyectos@conves.es  
jaga.info  
jagaventilacion.com

**BÉLGICA JAGA NV**

Verbindingslaan 16  
3590 Diepenbeek

+32 (0) 11 29 41 11

info@jaga.be  
jaga.com